



[Go to Product page](#)

Datasheet for ABIN2721550

GADD34 Protein (Myc-DYKDDDDK Tag)

1 Image

Overview

Quantity:	20 µg
Target:	GADD34 (PPP1R15A)
Origin:	Human
Source:	HEK-293 Cells
Protein Type:	Recombinant
Purification tag / Conjugate:	This GADD34 protein is labelled with Myc-DYKDDDDK Tag.
Application:	Antibody Production (AbP), Standard (STD)

Product Details

Characteristics:	<ul style="list-style-type: none">• Recombinant human GADD34 / PPP1R15A protein expressed in HEK293 cells.• Produced with end-sequenced ORF clone
------------------	--------------------------------------------------------------------------------------------------------------------------------------------------------------------------

Purity:	> 80 % as determined by SDS-PAGE and Coomassie blue staining
---------	--------------------------------------------------------------

Target Details

Target:	GADD34 (PPP1R15A)
Alternative Name:	Gadd34,ppp1r15a (PPP1R15A Products)
Background:	This gene is a member of a group of genes whose transcript levels are increased following stressful growth arrest conditions and treatment with DNA-damaging agents. The induction of this gene by ionizing radiation occurs in certain cell lines regardless of p53 status, and its protein response is correlated with apoptosis following ionizing radiation.
Molecular Weight:	73.3 kDa

Target Details

NCBI Accession: [NP_055145](#)

Pathways: [ER-Nucleus Signaling](#), [Unfolded Protein Response](#)

Application Details

Application Notes: Recombinant human proteins can be used for:
Native antigens for optimized antibody production
Positive controls in ELISA and other antibody assays

Comment: The tag is located at the C-terminal.

Restrictions: For Research Use only

Handling

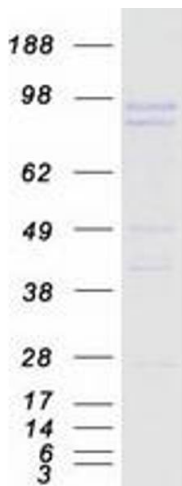
Concentration: 50 µg/mL

Buffer: 25 mM Tris.HCl, pH 7.3, 100 mM glycine, 10 % glycerol.

Storage: -80 °C

Storage Comment: Store at -80°C. Thaw on ice, aliquot to individual single-use tubes, and then re-freeze immediately. Only 2-3 freeze thaw cycles are recommended.

Images



Western Blotting

Image 1. Validation with Western Blot