

Datasheet for ABIN2721555

## GADD45B Protein (Myc-DYKDDDDK Tag)



[Go to Product page](#)

### 1 Image

#### Overview

Quantity:	20 µg
Target:	GADD45B
Origin:	Human
Source:	HEK-293 Cells
Protein Type:	Recombinant
Purification tag / Conjugate:	This GADD45B protein is labelled with Myc-DYKDDDDK Tag.
Application:	Antibody Production (AbP), Standard (STD)

#### Product Details

Characteristics:	<ul style="list-style-type: none"> <li>• Recombinant human GADD45B protein expressed in HEK293 cells.</li> <li>• Produced with end-sequenced ORF clone</li> </ul>
Purity:	> 80 % as determined by SDS-PAGE and Coomassie blue staining

#### Target Details

Target:	GADD45B
Alternative Name:	Gadd45b ( <a href="#">GADD45B Products</a> )
Background:	<p>This gene is a member of a group of genes whose transcript levels are increased following stressful growth arrest conditions and treatment with DNA-damaging agents. The genes in this group respond to environmental stresses by mediating activation of the p38/JNK pathway. This activation is mediated via their proteins binding and activating MTK1/MEKK4 kinase, which is an upstream activator of both p38 and JNK MAPKs. The function of these genes or their</p>

## Target Details

protein products is involved in the regulation of growth and apoptosis. These genes are regulated by different mechanisms, but they are often coordinately expressed and can function cooperatively in inhibiting cell growth.

Molecular Weight:	17.6 kDa
NCBI Accession:	<a href="#">NP_056490</a>
Pathways:	<a href="#">Cell Division Cycle</a>

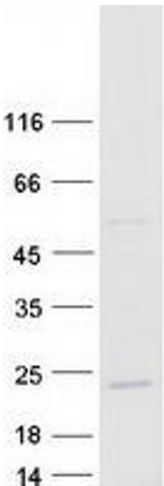
## Application Details

Application Notes:	Recombinant human proteins can be used for: Native antigens for optimized antibody production Positive controls in ELISA and other antibody assays
Comment:	The tag is located at the C-terminal.
Restrictions:	For Research Use only

## Handling

Concentration:	50 µg/mL
Buffer:	25 mM Tris.HCl, pH 7.3, 100 mM glycine, 10 % glycerol.
Storage:	-80 °C
Storage Comment:	Store at -80°C. Thaw on ice, aliquot to individual single-use tubes, and then re-freeze immediately. Only 2-3 freeze thaw cycles are recommended.

## Images



### Western Blotting

**Image 1.** Validation with Western Blot