



[Go to Product page](#)

Datasheet for ABIN2721750

## anti-GBE1 antibody

3 Images

2 Publications

### Overview

Quantity:	0.1 mL
Target:	GBE1
Reactivity:	Human
Host:	Mouse
Clonality:	Monoclonal
Application:	Western Blotting (WB), Immunohistochemistry (IHC), Immunofluorescence (IF), Immunoprecipitation (IP), Flow Cytometry (FACS)

### Product Details

Immunogen:	Full length human recombinant protein of human GBE1 (NP_000149) produced in HEK293T cell.
Clone:	1D11
Isotype:	IgG1
Purification:	Purified from mouse ascites fluids by affinity chromatography

### Target Details

Target:	GBE1
Alternative Name:	GBE1 ( <a href="#">GBE1 Products</a> )
Molecular Weight:	80.3 kDa
Gene ID:	2632

## Target Details

---

NCBI Accession:	<a href="#">NM_000158</a>
HGNC:	2632
Pathways:	<a href="#">Cellular Glucan Metabolic Process</a>

## Application Details

---

Application Notes:	WB 1:500~2000, IHC 1:50, IF 1:50~100, FLOW 1:100, IP 2 µg/500 µL
Comment:	The concentration of the product may vary between different lots.
Restrictions:	For Research Use only

## Handling

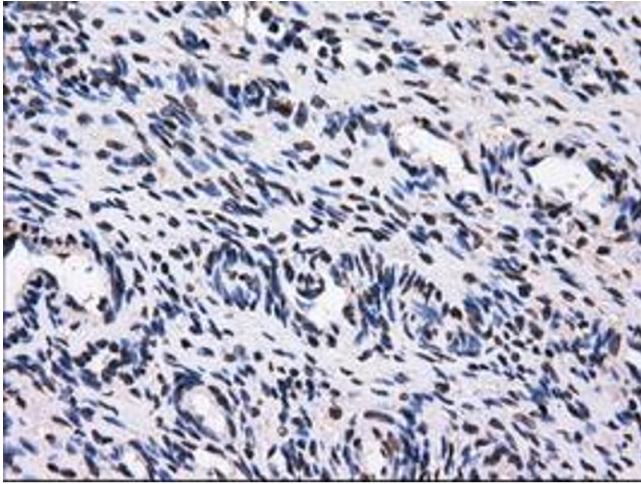
---

Format:	Liquid
Concentration:	0.5-1.0 mg/mL
Buffer:	PBS (pH 7.3) containing 1 % BSA, 50 % glycerol and 0.02 % sodium azide.
Preservative:	Sodium azide
Precaution of Use:	This product contains sodium azide: a POISONOUS AND HAZARDOUS SUBSTANCE which should be handled by trained staff only.

## Publications

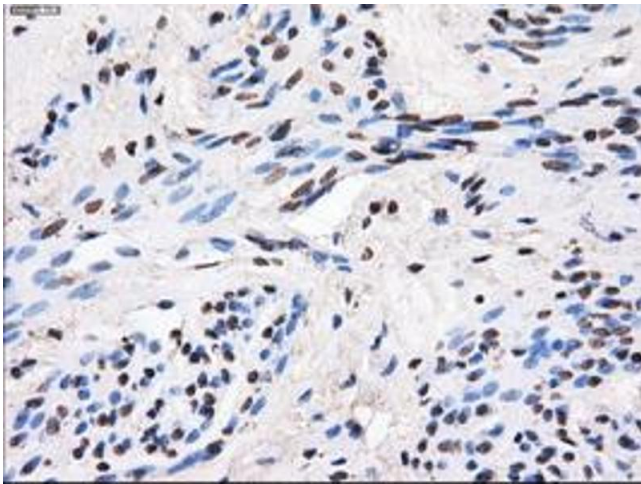
---

Product cited in:	Massaro, Mattar, Wong, Sirka, Buckley, Herbert, Karlsson, Perocheau, Burke, Heales, Richard-Londt, Brandner, Huebecker, Priestman, Platt, Mills, Biswas, Cooper, Chan, Cheng, Waddington, Rahim: "Fetal gene therapy for neurodegenerative disease of infants." in: <b>Nature medicine</b> , Vol. 24, Issue 9, pp. 1317-1323, (2018) ( <a href="#">PubMed</a> ).
-------------------	------------------------------------------------------------------------------------------------------------------------------------------------------------------------------------------------------------------------------------------------------------------------------------------------------------------------------------------------------------------



#### Immunohistochemistry

**Image 1.** Immunohistochemical staining of paraffin-embedded colon tissue using anti-GBE1 mouse monoclonal antibody. (ABIN2453067, Dilution 1:50)



#### Immunohistochemistry

**Image 2.** Immunohistochemical staining of paraffin-embedded Ovary tissue using anti-GBE1 mouse monoclonal antibody. (ABIN2453067, Dilution 1:50)



#### Immunohistochemistry

**Image 3.** Immunohistochemical staining of paraffin-embedded endometrium tissue using anti-GBE1 mouse monoclonal antibody. (ABIN2453067, Dilution 1:50)