

Datasheet for ABIN2721761

**anti-GCKR antibody**

3 Images

[Go to Product page](#)

## Overview

Quantity:	0.1 mL
Target:	GCKR
Reactivity:	Human
Host:	Mouse
Clonality:	Monoclonal
Application:	Western Blotting (WB), Immunohistochemistry (IHC), Immunofluorescence (IF)

## Product Details

Immunogen:	Full length human recombinant protein of human GCKR (NP_001477) produced in HEK293T cell.
Clone:	1E7
Isotype:	IgG1
Characteristics:	Homo sapiens glucokinase (hexokinase 4) regulator (GCKR)
Purification:	Purified from mouse ascites fluids by affinity chromatography

## Target Details

Target:	GCKR
Alternative Name:	GCKR ( <a href="#">GCKR Products</a> )
Background:	This gene encodes a protein belonging to the GCKR subfamily of the SIS (Sugar ISomerase) family of proteins. The gene product is a regulatory protein that inhibits glucokinase in liver and pancreatic islet cells by binding non-covalently to form an inactive complex with the enzyme.

## Target Details

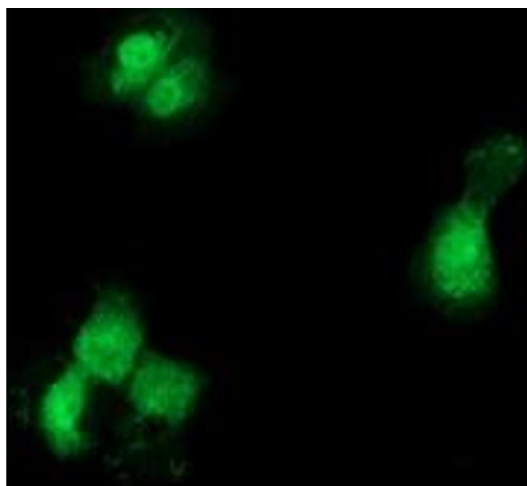
	This gene is considered a susceptibility gene candidate for a form of maturity-onset diabetes of the young (MODY).
Molecular Weight:	68.5 kDa
Gene ID:	2646
NCBI Accession:	<a href="#">NP_001477</a>
HGNC:	2646
Pathways:	<a href="#">Carbohydrate Homeostasis</a> , <a href="#">Regulation of Carbohydrate Metabolic Process</a> , <a href="#">Protein targeting to Nucleus</a>

## Application Details

Application Notes:	WB 1:2000, IHC 1:150, IF 1:100,
Comment:	The concentration of the product may vary between different lots.
Restrictions:	For Research Use only

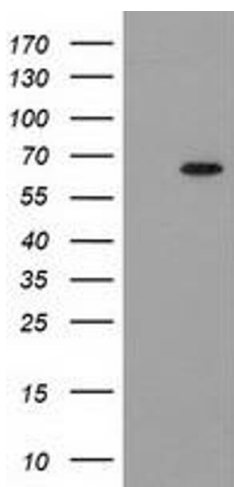
## Handling

Format:	Liquid
Concentration:	0.5-1.0 mg/mL
Buffer:	PBS (PH 7.3) containing 1 % BSA, 50 % glycerol and 0.02 % sodium azide.
Preservative:	Sodium azide
Precaution of Use:	This product contains sodium azide: a POISONOUS AND HAZARDOUS SUBSTANCE which should be handled by trained staff only.
Storage:	-20 °C



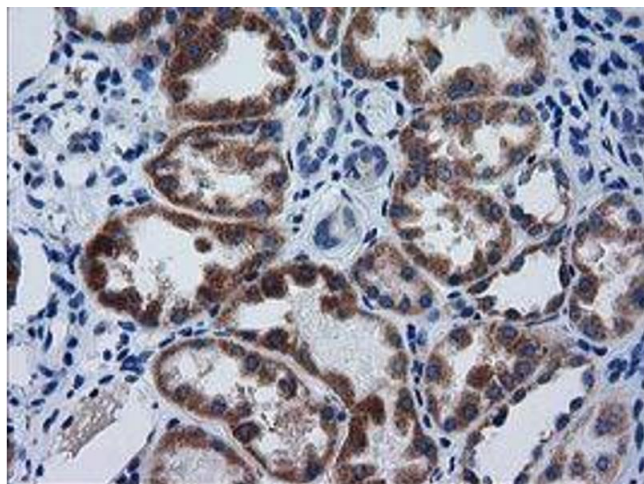
#### Immunofluorescence

**Image 1.** Anti-GCKR mouse monoclonal antibody (ABIN2454023) immunofluorescent staining of COS7 cells transiently transfected by pCMV6-ENTRY GCKR (RC214230).



#### Western Blotting

**Image 2.** HEK293T cells were transfected with the pCMV6-ENTRY control (Left lane) or pCMV6-ENTRY GCKR (Right lane) cDNA for 48 hrs and lysed. Equivalent amounts of cell lysates (5 µg per lane) were separated by SDS-PAGE and immunoblotted with anti-GCKR.



#### Immunohistochemistry

**Image 3.** Immunohistochemical staining of paraffin-embedded Human Kidney tissue using anti-GCKR mouse monoclonal antibody. (ABIN2454023)