



[Go to Product page](#)

Datasheet for ABIN2721781

GDNF Protein (Transcript Variant 1)

1 Image

Overview

| | |
|--------------------------|--|
| Quantity: | 10 µg |
| Target: | GDNF |
| Protein Characteristics: | Transcript Variant 1 |
| Origin: | Human |
| Source: | Escherichia coli (E. coli) |
| Protein Type: | Recombinant |
| Biological Activity: | Active |
| Application: | Functional Studies (Func), Antibody Production (AbP), Standard (STD), Protein Interaction (PI) |

Product Details

| | |
|------------------------------|---|
| Specificity: | Optimal preservation of protein structure, post-translational modifications and functions. |
| Characteristics: | <ul style="list-style-type: none">• Recombinant human GDNF (transcript variant 1) protein expressed in E. coli.• Produced with end-sequenced ORF clone• Tested for bioactivity. |
| Purity: | > 95 % as determined by SDS-PAGE and Coomassie blue staining |
| Endotoxin Level: | Endotoxin level is <0.1 ng/µg of protein (<1EU/µg). |
| Biological Activity Comment: | ED50 was determined by the proliferation of rat C6 cells is > 0.1 ng/ml, corresponding to a specific activity of > 1 x 10 ⁷ units/mg. |

Target Details

| | |
|---------|------|
| Target: | GDNF |
|---------|------|

Target Details

Alternative Name: [Gdnf \(GDNF Products\)](#)

Background: This gene encodes a secreted ligand of the TGF-beta (transforming growth factor-beta) superfamily of proteins. Ligands of this family bind various TGF-beta receptors leading to recruitment and activation of SMAD family transcription factors that regulate gene expression. The encoded preproprotein is proteolytically processed to generate each subunit of the disulfide-linked homodimer. The recombinant form of this protein, a highly conserved neurotrophic factor, was shown to promote the survival and differentiation of dopaminergic neurons in culture, and was able to prevent apoptosis of motor neurons induced by axotomy. This protein is a ligand for the product of the RET (rearranged during transfection) protooncogene. Mutations in this gene may be associated with Hirschsprung disease and Tourette syndrome. This gene encodes multiple protein isoforms that may undergo similar proteolytic processing.

Molecular Weight: 15 kDa

NCBI Accession: [NP_000505](#)

Pathways: [RTK Signaling](#), [Synaptic Membrane](#), [Tube Formation](#), [Autophagy](#), [Smooth Muscle Cell Migration](#)

Application Details

Application Notes: Recombinant human proteins can be used for:
Native antigens for optimized antibody production
Positive controls in ELISA and other antibody assays
Protein-protein interaction
In vitro biochemical assays and cell-based functional assays

Restrictions: For Research Use only

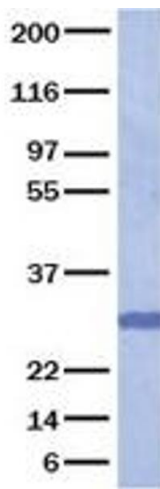
Handling

Buffer: Lyophilized from a 0.2 µM filtered solution of 20 mM phosphate buffer, 100 mM NaCl, pH 7.2

Handling Advice: Resuspend the protein in the desired concentration in proper buffer

Storage: -80 °C

Storage Comment: Store at -80°C. Thaw on ice, aliquot to individual single-use tubes, and then re-freeze immediately. Only 2-3 freeze thaw cycles are recommended.



Western Blotting

Image 1. Validation with Western Blot