



Datasheet for ABIN2721823

Chromosome 7 Open Reading Frame 20 (C7orf20) protein (DYKDDDDK Tag)



[Go to Product page](#)

1 Image

Overview

| | |
|-------------------------------|--|
| Quantity: | 20 µg |
| Target: | Chromosome 7 Open Reading Frame 20 (C7orf20) |
| Origin: | Human |
| Source: | Insect cells (Sf9) |
| Protein Type: | Recombinant |
| Purification tag / Conjugate: | DYKDDDDK Tag |
| Application: | Antibody Production (AbP), Standard (STD) |

Product Details

| | |
|------------------|--|
| Characteristics: | <ul style="list-style-type: none">• Recombinant human GET4 (full length, C-term DDK tag) protein expressed in Sf9 cells.• Produced with end-sequenced ORF clone |
| Purity: | > 80 % as determined by SDS-PAGE and Coomassie blue staining |

Target Details

| | |
|-------------------|--|
| Target: | Chromosome 7 Open Reading Frame 20 (C7orf20) |
| Alternative Name: | Get4 (C7orf20 Products) |
| Molecular Weight: | 36.3 kDa |
| NCBI Accession: | NP_057033 |

Application Details

Application Notes: Recombinant human proteins can be used for:
Native antigens for optimized antibody production
Positive controls in ELISA and other antibody assays

Comment: The tag is located at the C-terminal.

Restrictions: For Research Use only

Handling

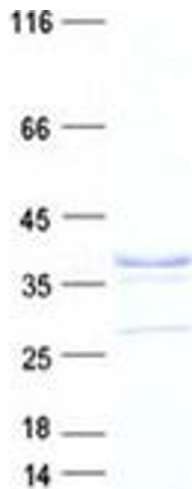
Concentration: 50 µg/mL

Buffer: 50 mM Tris-HCl, pH 8.0, 100 mM glycine, 10 % glycerol.

Storage: -80 °C

Storage Comment: Store at -80°C. Thaw on ice, aliquot to individual single-use tubes, and then re-freeze immediately. Only 2-3 freeze thaw cycles are recommended.

Images



Western Blotting

Image 1. Validation with Western Blot