

Datasheet for ABIN2721865

**GGPS1 Protein (Transcript Variant 2) (His tag)**[Go to Product page](#)**1** Image

## Overview

Quantity:	10 µg
Target:	GGPS1
Protein Characteristics:	Transcript Variant 2
Origin:	Human
Source:	Escherichia coli (E. coli)
Protein Type:	Recombinant
Purification tag / Conjugate:	This GGPS1 protein is labelled with His tag.
Application:	Antibody Production (AbP), Standard (STD)

## Product Details

Characteristics:	<ul style="list-style-type: none"><li>• Recombinant human GGPP synthetase (transcript variant 2) protein expressed in E. coli.</li><li>• Produced with end-sequenced ORF clone</li></ul>
Purity:	> 95 % as determined by SDS-PAGE and Coomassie blue staining
Endotoxin Level:	< 0.1 EU per µg protein as determined by LAL test

## Target Details

Target:	GGPS1
Alternative Name:	Ggpp Synthetase ( <a href="#">GGPS1 Products</a> )
Background:	Catalyzes the trans-addition of the three molecules of IPP onto DMAPP to form geranylgeranyl pyrophosphate, an important precursor of carotenoids and geranylated proteins.

## Target Details

[UniProtKB/Swiss-Prot Function]

Molecular Weight: 37 kDa

NCBI Accession: [NP\\_001032354](#)

## Application Details

Application Notes: Recombinant human proteins can be used for:  
Native antigens for optimized antibody production  
Positive controls in ELISA and other antibody assays

Comment: The tag is located at the C-terminal.

Restrictions: For Research Use only

## Handling

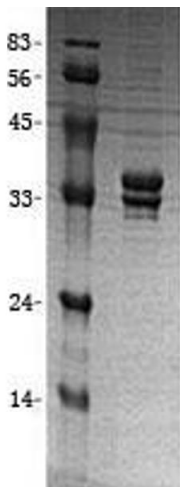
Concentration: 50 µg/mL

Buffer: 20 mM Tris-HCl, 150 mM NaCl, pH 8.0. Avoid repeated freeze-thaw cycles. Stable for at least 3 months from receipt of products under proper storage and handling conditions.

Storage: -80 °C

Storage Comment: Store at -80°C. Thaw on ice, aliquot to individual single-use tubes, and then re-freeze immediately. Only 2-3 freeze thaw cycles are recommended.

## Images



### Western Blotting

**Image 1.** Validation with Western Blot