



[Go to Product page](#)

Datasheet for ABIN2721986

anti-SLC2A5 antibody

3 Images

Overview

Quantity:	0.1 mL
Target:	SLC2A5
Reactivity:	Human, Monkey
Host:	Mouse
Clonality:	Monoclonal
Application:	Western Blotting (WB), Immunohistochemistry (IHC), Immunoprecipitation (IP), Flow Cytometry (FACS)

Product Details

Immunogen:	Full length human recombinant protein of human SLC2A5 (NP_003030) produced in HEK293T cell.
Clone:	9F3
Isotype:	IgG1
Purification:	Purified from mouse ascites fluids by affinity chromatography

Target Details

Target:	SLC2A5
Alternative Name:	SLC2A5 (SLC2A5 Products)
Molecular Weight:	54.8 kDa
Gene ID:	6518

Target Details

NCBI Accession: [NM_003039](#)

HGNC: 6518

Application Details

Application Notes: WB 1:500~1000, IHC 1:50, FLOW 1:100, IP 2 µg/500 µL

Comment: The concentration of the product may vary between diferrent lots.

Restrictions: For Research Use only

Handling

Format: Liquid

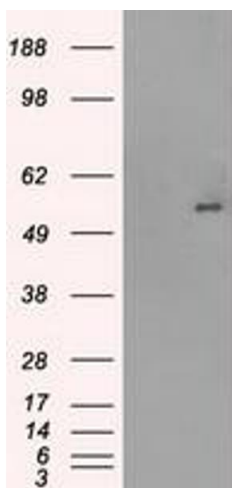
Concentration: 0.5-1.0 mg/mL

Buffer: PBS (pH 7.3) containing 1 % BSA, 50 % glycerol and 0.02 % sodium azide.

Preservative: Sodium azide

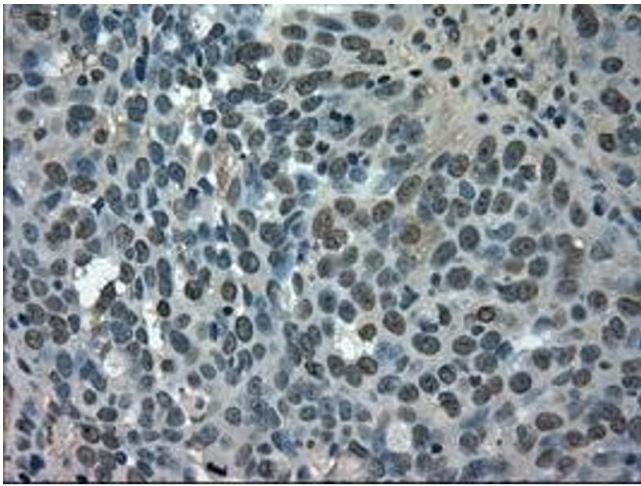
Precaution of Use: This product contains sodium azide: a POISONOUS AND HAZARDOUS SUBSTANCE which should be handled by trained staff only.

Images



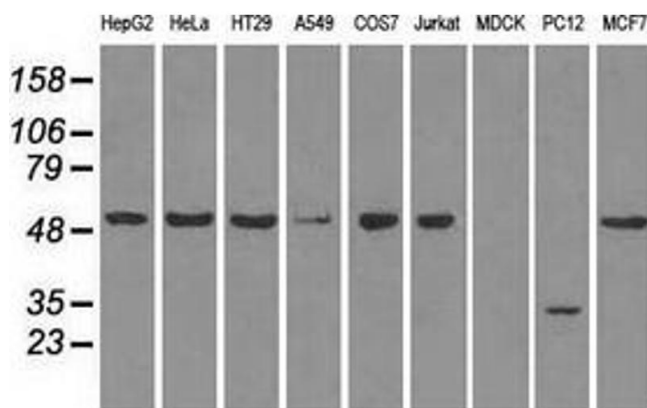
Western Blotting

Image 1. HEK293T cells were transfected with the pCMV6-ENTRY control (Left lane) or pCMV6-ENTRY SLC2A5 (Right lane) cDNA for 48 hrs and lysed. Equivalent amounts of cell lysates (5 µg per lane) were separated by SDS-PAGE and immunoblotted with anti-SLC2A5.



Immunohistochemistry

Image 2. HEK293T cells were transfected with the pCMV6-ENTRY control (Left lane) or pCMV6-ENTRY SLC2A5 (Right lane) cDNA for 48 hrs and lysed. Equivalent amounts of cell lysates (5 μ g per lane) were separated by SDS-PAGE and immunoblotted with anti-SLC2A5.



Western Blotting

Image 3. Western blot analysis of extracts (35 μ g) from 9 different cell lines by using anti-SLC2A5 monoclonal antibody.