

Datasheet for ABIN2722046

Glycogenin 2 Protein (GYG2) (Transcript Variant 4) (Myc-DYKDDDDK Tag)[Go to Product page](#)**1** Image

Overview

Quantity:	20 µg
Target:	Glycogenin 2 (GYG2)
Protein Characteristics:	Transcript Variant 4
Origin:	Human
Source:	HEK-293 Cells
Protein Type:	Recombinant
Purification tag / Conjugate:	This Glycogenin 2 protein is labelled with Myc-DYKDDDDK Tag.
Application:	Antibody Production (AbP), Standard (STD)

Product Details

Characteristics:	<ul style="list-style-type: none">• Recombinant human Glycogenin-2 (GYG2) (transcript variant 4) protein expressed in HEK293 cells.• Produced with end-sequenced ORF clone
Purity:	> 80 % as determined by SDS-PAGE and Coomassie blue staining

Target Details

Target:	Glycogenin 2 (GYG2)
Alternative Name:	Glycogenin-2 (Gyg2) (GYG2 Products)
Background:	This gene encodes a member of the the glycogenin family. Glycogenin is a self-glucosylating protein involved in the initiation reactions of glycogen biosynthesis. A gene on chromosome 3 encodes the muscle glycogenin and this X-linked gene encodes the glycogenin mainly present

Target Details

in liver both are involved in blood glucose homeostasis. This gene has a short version on chromosome Y, which is 3' truncated and can not make a functional protein. Multiple alternatively spliced transcript variants encoding different isoforms have been identified.[provided by RefSeq, May 2010].

Molecular Weight: 48

NCBI Accession: [NP_001171632](#)

Pathways: [Cellular Glucan Metabolic Process](#)

Application Details

Application Notes: Recombinant human proteins can be used for:
Native antigens for optimized antibody production
Positive controls in ELISA and other antibody assays

Comment: The tag is located at the C-terminal.

Restrictions: For Research Use only

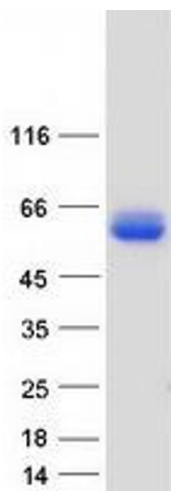
Handling

Concentration: 50 µg/mL

Buffer: 25 mM Tris.HCl, pH 7.3, 100 mM glycine, 10 % glycerol.

Storage: -80 °C

Storage Comment: Store at -80°C. Thaw on ice, aliquot to individual single-use tubes, and then re-freeze immediately. Only 2-3 freeze thaw cycles are recommended.



Western Blotting

Image 1. Validation with Western Blot