

Datasheet for ABIN2722230

GRB2 Protein (Transcript Variant 1) (His tag)[Go to Product page](#)**1** Image

Overview

Quantity:	10 µg
Target:	GRB2
Protein Characteristics:	Transcript Variant 1
Origin:	Human
Source:	Escherichia coli (E. coli)
Protein Type:	Recombinant
Purification tag / Conjugate:	This GRB2 protein is labelled with His tag.
Application:	Antibody Production (AbP), Standard (STD)

Product Details

Characteristics:	<ul style="list-style-type: none">• Recombinant human GRB2 / ASH (transcript variant 1) protein expressed in E. coli.• Produced with end-sequenced ORF clone
Purity:	> 95 % as determined by SDS-PAGE and Coomassie blue staining
Endotoxin Level:	< 0.1 EU per µg protein as determined by LAL test

Target Details

Target:	GRB2
Alternative Name:	Grb2,ash (GRB2 Products)
Background:	Isoform 2 does not bind to phosphorylated epidermal growth factor receptor (EGFR) but inhibits EGF-induced transactivation of a RAS-responsive element. Isoform 2 acts as a

Target Details

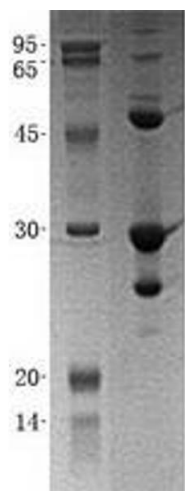
	dominant negative protein over GRB2 and by suppressing proliferative signals, may trigger active programmed cell death. [UniProtKB/Swiss-Prot Function]
Molecular Weight:	26.3 kDa
NCBI Accession:	NP_002077
Pathways:	RTK Signaling , TCR Signaling , Fc-epsilon Receptor Signaling Pathway , EGFR Signaling Pathway , Neurotrophin Signaling Pathway , Regulation of Actin Filament Polymerization , Hepatitis C , Signaling Events mediated by VEGFR1 and VEGFR2 , Signaling of Hepatocyte Growth Factor Receptor , EGFR Downregulation

Application Details

Application Notes:	Recombinant human proteins can be used for: Native antigens for optimized antibody production Positive controls in ELISA and other antibody assays
Comment:	The tag is located at the C-terminal.
Restrictions:	For Research Use only

Handling

Buffer:	Lyophilized from a 0.2 µM filtered solution of 20 mM Tris-HCl, 150 mM NaCl, pH 8.0. Stable for at least 6 months from date of receipt under proper storage and handling conditions.
Storage:	-80 °C
Storage Comment:	Store at -80°C. Thaw on ice, aliquot to individual single-use tubes, and then re-freeze immediately. Only 2-3 freeze thaw cycles are recommended.



Western Blotting

Image 1. Validation with Western Blot