

Datasheet for ABIN2722248

**anti-GRIPAP1 antibody**[Go to Product page](#)

## 3 Images

## Overview

Quantity:	0.1 mL
Target:	GRIPAP1
Reactivity:	Human
Host:	Mouse
Clonality:	Monoclonal
Conjugate:	This GRIPAP1 antibody is un-conjugated
Application:	Western Blotting (WB), Immunohistochemistry (IHC), Immunofluorescence (IF), Flow Cytometry (FACS)

## Product Details

Immunogen:	Full length human recombinant protein of human GRIPAP1 (NP_064522) produced in HEK293T cell.
Clone:	2C11
Isotype:	IgG1
Purification:	Purified from mouse ascites fluids by affinity chromatography

## Target Details

Target:	GRIPAP1
Alternative Name:	GRIPAP1 ( <a href="#">GRIPAP1 Products</a> )
Molecular Weight:	96.0 kDa

## Target Details

Gene ID:	56850
NCBI Accession:	<a href="#">NM_020137</a>
HGNC:	56850
Pathways:	<a href="#">SARS-CoV-2 Protein Interactome</a>

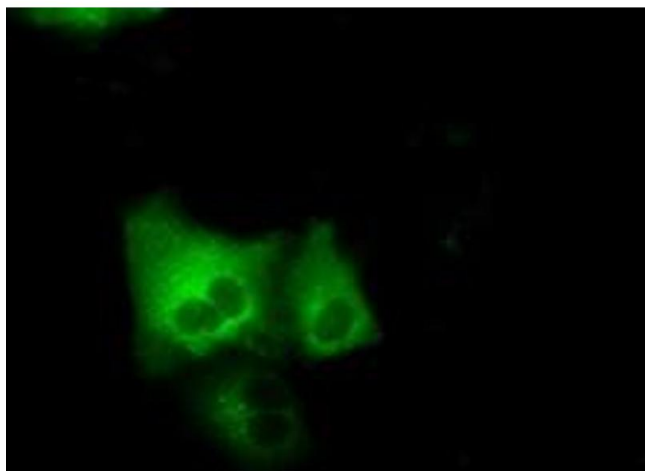
## Application Details

Application Notes:	WB 1:1000, IHC 1:50, IF 1:100, Flow 1:100
Comment:	The concentration of the product may vary between diferrent lots.
Restrictions:	For Research Use only

## Handling

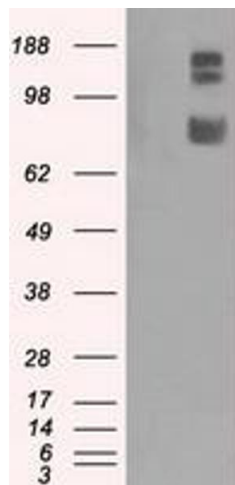
Format:	Liquid
Concentration:	0.5-1.0 mg/mL
Buffer:	PBS ( pH 7.3) containing 1 % BSA, 50 % glycerol and 0.02 % sodium azide.
Preservative:	Sodium azide
Precaution of Use:	This product contains sodium azide: a POISONOUS AND HAZARDOUS SUBSTANCE which should be handled by trained staff only.

## Images



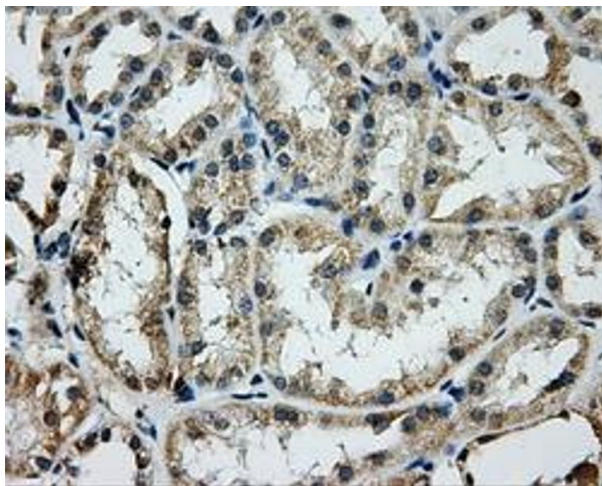
### Immunofluorescence

**Image 1.** Anti-GRIPAP1 mouse monoclonal antibody (ABIN2453087) immunofluorescent staining of COS7 cells transiently transfected by pCMV6-ENTRY GRIPAP1 (RC210936).



### Western Blotting

**Image 2.** HEK293T cells were transfected with the pCMV6-ENTRY control (Left lane) or pCMV6-ENTRY GRIPAP1 (Right lane) cDNA for 48 hrs and lysed. Equivalent amounts of cell lysates (5 µg per lane) were separated by SDS-PAGE and immunoblotted with anti-GRIPAP1.



### Immunohistochemistry

**Image 3.** Immunohistochemical staining of paraffin-embedded Kidney tissue using anti-GRIPAP1 mouse monoclonal antibody. (ABIN2453087, Dilution 1:50)