

Datasheet for ABIN2722327

C16orf80 Protein (Myc-DYKDDDDK Tag)



[Go to Product page](#)

1 Image

Overview

Quantity:	20 µg
Target:	C16orf80
Origin:	Human
Source:	HEK-293 Cells
Protein Type:	Recombinant
Purification tag / Conjugate:	This C16orf80 protein is labelled with Myc-DYKDDDDK Tag.
Application:	Antibody Production (AbP), Standard (STD)

Product Details

Characteristics:	<ul style="list-style-type: none">• Recombinant human GTL3 / C16orf80 protein expressed in HEK293 cells.• Produced with end-sequenced ORF clone
Purity:	> 80 % as determined by SDS-PAGE and Coomassie blue staining

Target Details

Target:	C16orf80
Alternative Name:	Gtl3,c16orf80 (C16orf80 Products)
Molecular Weight:	22.6 kDa
NCBI Accession:	NP_037374

Application Details

Application Notes: Recombinant human proteins can be used for:
Native antigens for optimized antibody production
Positive controls in ELISA and other antibody assays

Comment: The tag is located at the C-terminal.

Restrictions: For Research Use only

Handling

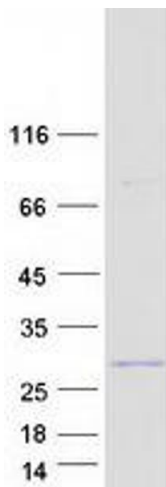
Concentration: 50 µg/mL

Buffer: 25 mM Tris.HCl, pH 7.3, 100 mM glycine, 10 % glycerol.

Storage: -80 °C

Storage Comment: Store at -80°C. Thaw on ice, aliquot to individual single-use tubes, and then re-freeze immediately. Only 2-3 freeze thaw cycles are recommended.

Images



Western Blotting

Image 1. Validation with Western Blot