

Datasheet for ABIN2722378

Glycogen Synthase 2 Protein (Myc-DYKDDDDK Tag)[Go to Product page](#)**1** Image

Overview

Quantity:	20 µg
Target:	Glycogen Synthase 2 (GYS2)
Origin:	Human
Source:	HEK-293 Cells
Protein Type:	Recombinant
Purification tag / Conjugate:	This Glycogen Synthase 2 protein is labelled with Myc-DYKDDDDK Tag.
Application:	Antibody Production (AbP), Standard (STD)

Product Details

Characteristics:	<ul style="list-style-type: none">• Recombinant human GYS2 protein expressed in HEK293 cells.• Produced with end-sequenced ORF clone
Purity:	> 80 % as determined by SDS-PAGE and Coomassie blue staining

Target Details

Target:	Glycogen Synthase 2 (GYS2)
Alternative Name:	Gys2 (GYS2 Products)
Background:	The protein encoded by this gene, liver glycogen synthase, catalyzes the rate-limiting step in the synthesis of glycogen - the transfer of a glucose molecule from UDP-glucose to a terminal branch of the glycogen molecule. Mutations in this gene cause glycogen storage disease type 0 (GSD-0) - a rare type of early childhood fasting hypoglycemia with decreased liver glycogen content.

Target Details

Molecular Weight:	80.8 kDa
NCBI Accession:	NP_068776
Pathways:	AMPK Signaling , Cellular Glucan Metabolic Process

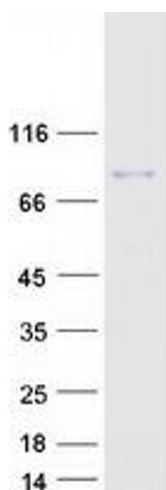
Application Details

Application Notes:	Recombinant human proteins can be used for: Native antigens for optimized antibody production Positive controls in ELISA and other antibody assays
Comment:	The tag is located at the C-terminal.
Restrictions:	For Research Use only

Handling

Concentration:	50 µg/mL
Buffer:	25 mM Tris.HCl, pH 7.3, 100 mM glycine, 10 % glycerol.
Storage:	-80 °C
Storage Comment:	Store at -80°C. Thaw on ice, aliquot to individual single-use tubes, and then re-freeze immediately. Only 2-3 freeze thaw cycles are recommended.

Images



Western Blotting

Image 1. Validation with Western Blot