



[Go to Product page](#)

Datasheet for ABIN2722566

## HSF2 Protein (Transcript Variant 2) (His tag)

### 1 Image

#### Overview

Quantity:	10 µg
Target:	HSF2
Protein Characteristics:	Transcript Variant 2
Origin:	Human
Source:	Escherichia coli (E. coli)
Protein Type:	Recombinant
Purification tag / Conjugate:	This HSF2 protein is labelled with His tag.
Application:	Antibody Production (AbP), Standard (STD)

#### Product Details

Characteristics:	<ul style="list-style-type: none"><li>• Recombinant human Heat shock factor 2 / HSF2 (transcript variant 2) protein expressed in E. coli.</li><li>• Produced with end-sequenced ORF clone</li></ul>
Purity:	> 95 % as determined by SDS-PAGE and Coomassie blue staining
Endotoxin Level:	< 0.1 EU per µg protein as determined by LAL test

#### Target Details

Target:	HSF2
Alternative Name:	Heat Shock Factor 2,hsf2 ( <a href="#">HSF2 Products</a> )
Background:	The protein encoded by this gene belongs to the HSF family of transcription factors that bind specifically to the heat-shock promoter element and activate transcription. Heat shock

## Target Details

transcription factors activate heat-shock response genes under conditions of heat or other stresses. Alternatively spliced transcript variants encoding different isoforms have been found for this gene.

Molecular Weight: 15.9 kDa

NCBI Accession: [NP\\_001129036](#)

## Application Details

Application Notes: Recombinant human proteins can be used for:  
Native antigens for optimized antibody production  
Positive controls in ELISA and other antibody assays

Comment: The tag is located at the C-terminal.

Restrictions: For Research Use only

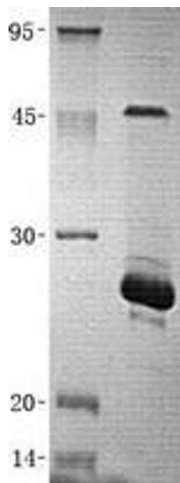
## Handling

Buffer: Lyophilized from a 0.2  $\mu$ M filtered solution of 20 mM Phosphate buffer, 150 mM NaCl, 1 mM DTT, pH 7.2. Stable for at least 6 months from date of receipt under proper storage and handling conditions.

Storage: -80 °C

Storage Comment: Store at -80°C. Thaw on ice, aliquot to individual single-use tubes, and then re-freeze immediately. Only 2-3 freeze thaw cycles are recommended.

## Images



### Western Blotting

**Image 1.** Validation with Western Blot