

Datasheet for ABIN272264
anti-YWHAB antibody

2 Images



[Go to Product page](#)

Overview

Quantity:	0.1 mg
Target:	YWHAB
Reactivity:	Human, Mouse, Rat
Host:	Rabbit
Clonality:	Polyclonal
Conjugate:	This YWHAB antibody is un-conjugated
Application:	Western Blotting (WB), Immunofluorescence (IF), Immunohistochemistry (Paraffin-embedded Sections) (IHC (p)), Enzyme Immunoassay (EIA)

Product Details

Specificity:	This antibody detects endogenous levels of 14-3-3 beta protein. (region surrounding Gln69)
Cross-Reactivity (Details):	Species reactivity (expected):Mouse and Rat. Species reactivity (tested):Human.
Purification:	Affinity Chromatography using epitope-specific immunogen.

Target Details

Target:	YWHAB
Alternative Name:	14-3-3 Protein beta/alpha (YWHAB Products)
Background:	14-3-3 proteins regulate many cellular processes relevant to cancer biology, notably apoptosis, mitogenic signaling and cell-cycle checkpoints. Seven isoforms comprise this family of signaling intermediates, denoted 14-3-3 β , γ , ϵ , ζ , η , θ and σ . 14-3-3 proteins form dimers that

Target Details

present two binding sites for ligand proteins, thereby bringing together two proteins that may not otherwise associate. These ligands largely share a 14-3-3 consensus binding motif and exhibit serine/threonine phosphorylation. 14-3-3 proteins function in broad regulation of these ligand proteins, by cytoplasmic sequestration, occupation of interaction domains and import/export sequences, prevention of degradation, activation/repression of enzymatic activity and facilitation of protein modification, and thus loss of expression contributes to a vast array of pathogenic cellular activities. Synonyms: KCIP-1, Protein 1054, Protein kinase C inhibitor protein 1, YWHAB

Molecular Weight: approx. 28 kDa

Gene ID: 7529

NCBI Accession: [NP_003395](#)

UniProt: [P31946](#)

Pathways: [Fc-epsilon Receptor Signaling Pathway](#), [EGFR Signaling Pathway](#), [Neurotrophin Signaling Pathway](#), [Myometrial Relaxation and Contraction](#), [Maintenance of Protein Location](#)

Application Details

Application Notes: ELISA: 1: 10000approx. 1: 20000. WB: 1: 500approx. 1: 1000.
Other applications not tested.
Optimal dilutions are dependent on conditions and should be determined by the user.

Restrictions: For Research Use only

Handling

Concentration: 1.0 mg/mL

Buffer: Phosphate Buffered Saline (PBS), pH ~7.2, 0.05 % Sodium Azide

Preservative: Sodium azide

Precaution of Use: This product contains sodium azide: a POISONOUS AND HAZARDOUS SUBSTANCE which should be handled by trained staff only.

Handling Advice: Avoid repeated freezing and thawing.

Storage: 4 °C/-20 °C

Storage Comment: Store the antibody undiluted at 2-8 °C for one month or (in aliquots) at -20 °C for longer.

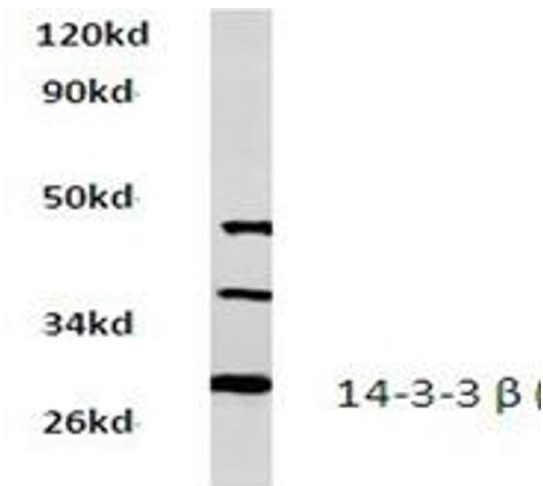


Image 1.



Image 2.