

Datasheet for ABIN2722719

anti-HIBCH antibody

3 Images

[Go to Product page](#)

Overview

Quantity:	0.1 mL
Target:	HIBCH
Reactivity:	Human, Rat, Dog
Host:	Mouse
Clonality:	Monoclonal
Conjugate:	This HIBCH antibody is un-conjugated
Application:	Western Blotting (WB), Immunofluorescence (IF), Flow Cytometry (FACS)

Product Details

Immunogen:	Full length human recombinant protein of human HIBCH (NP_055177) produced in HEK293T cell.
Clone:	5C5
Isotype:	IgG1
Purification:	Purified from mouse ascites fluids by affinity chromatography

Target Details

Target:	HIBCH
Alternative Name:	HIBCH (HIBCH Products)
Molecular Weight:	39.4 kDa
Gene ID:	26275

Target Details

NCBI Accession:	NM_014362
HGNC:	26275
Pathways:	Monocarboxylic Acid Catabolic Process

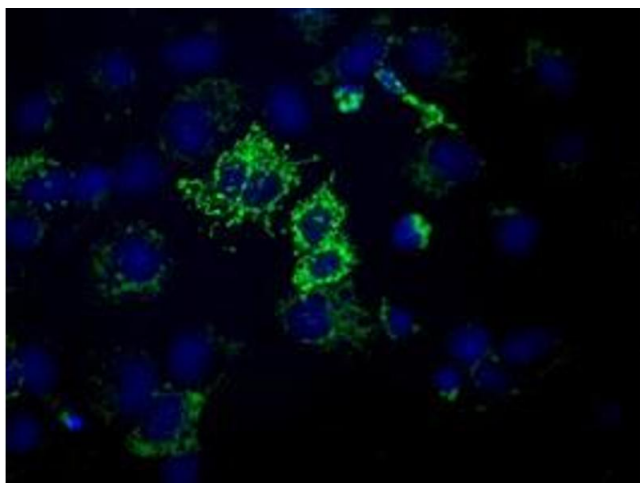
Application Details

Application Notes:	WB 1:2000, IF 1:100, FLOW 1:100
Comment:	The concentration of the product may vary between different lots.
Restrictions:	For Research Use only

Handling

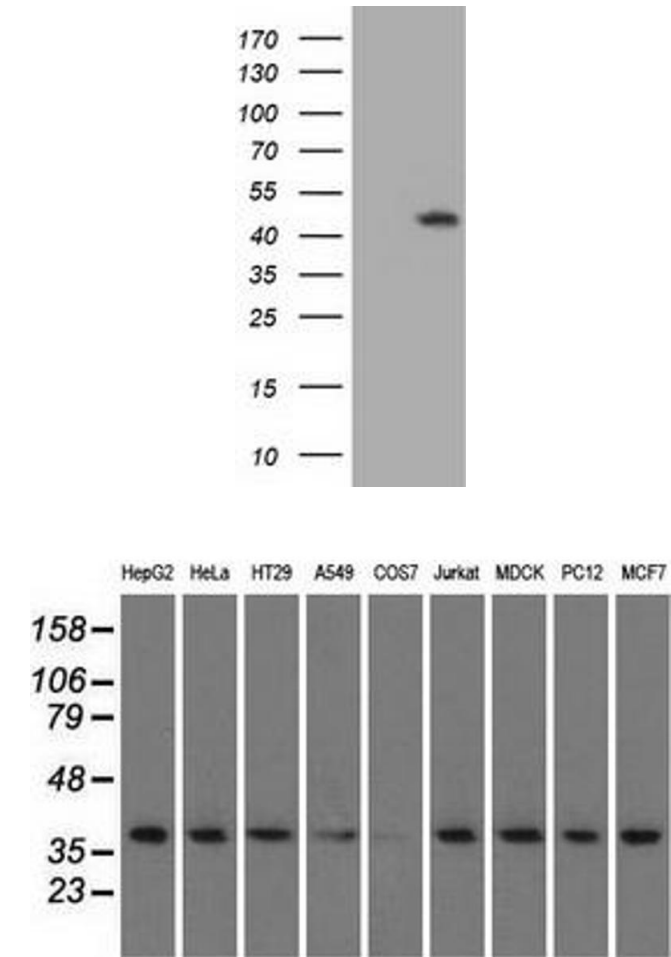
Format:	Liquid
Concentration:	0.5-1.0 mg/mL
Buffer:	PBS (pH 7.3) containing 1 % BSA, 50 % glycerol and 0.02 % sodium azide.
Preservative:	Sodium azide
Precaution of Use:	This product contains sodium azide: a POISONOUS AND HAZARDOUS SUBSTANCE which should be handled by trained staff only.

Images



Immunofluorescence

Image 1. Anti-HIBCH mouse monoclonal antibody (ABIN2453129) immunofluorescent staining of COS7 cells transiently transfected by pCMV6-ENTRY HIBCH (RC209814).



Western Blotting

Image 2. HEK293T cells were transfected with the pCMV6-ENTRY control (Left lane) or pCMV6-ENTRY HIBCH (Right lane) cDNA for 48 hrs and lysed. Equivalent amounts of cell lysates (5 µg per lane) were separated by SDS-PAGE and immunoblotted with anti-HIBCH.

Western Blotting

Image 3. Western blot analysis of extracts (35 µg) from 9 different cell lines by using anti-HIBCH monoclonal antibody.