

Datasheet for ABIN2722720
anti-HIBCH antibody



[Go to Product page](#)

3 Images

Overview

Quantity:	0.1 mL
Target:	HIBCH
Reactivity:	Human, Rat, Dog, Monkey
Host:	Mouse
Clonality:	Monoclonal
Application:	Western Blotting (WB), Immunofluorescence (IF), Flow Cytometry (FACS)

Product Details

Immunogen:	Full length human recombinant protein of human HIBCH (NP_055177) produced in HEK293T cell.
Clone:	3D11
Isotype:	IgG1
Purification:	Purified from mouse ascites fluids by affinity chromatography

Target Details

Target:	HIBCH
Alternative Name:	HIBCH (HIBCH Products)
Molecular Weight:	39.4 kDa
Gene ID:	26275
NCBI Accession:	NM_014362

Target Details

HGNC: 26275

Pathways: [Monocarboxylic Acid Catabolic Process](#)

Application Details

Application Notes: WB 1:500~2000, IF 1:100, FLOW 1:100

Comment: The concentration of the product may vary between diferrent lots.

Restrictions: For Research Use only

Handling

Format: Liquid

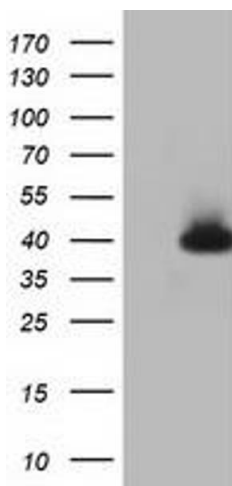
Concentration: 0.5-1.0 mg/mL

Buffer: PBS (PH 7.3) containing 1 % BSA, 50 % glycerol and 0.02 % sodium azide.

Preservative: Sodium azide

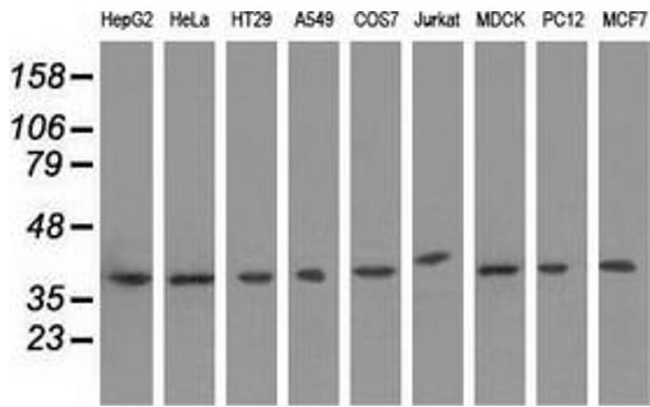
Precaution of Use: This product contains sodium azide: a POISONOUS AND HAZARDOUS SUBSTANCE which should be handled by trained staff only.

Images



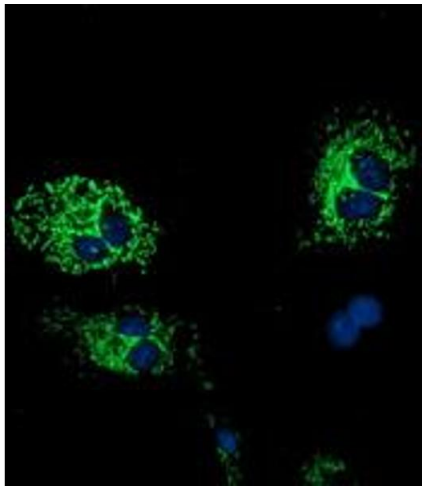
Western Blotting

Image 1. HEK293T cells were transfected with the pCMV6-ENTRY control (Left lane) or pCMV6-ENTRY HIBCH (Right lane) cDNA for 48 hrs and lysed. Equivalent amounts of cell lysates (5 µg per lane) were separated by SDS-PAGE and immunoblotted with anti-HIBCH.



Western Blotting

Image 2. Western blot analysis of extracts (35 µg) from 9 different cell lines by using anti-HIBCH monoclonal antibody.



Immunofluorescence

Image 3. Anti-HIBCH mouse monoclonal antibody (ABIN2453130) immunofluorescent staining of COS7 cells transiently transfected by pCMV6-ENTRY HIBCH (RC209814).