

Datasheet for ABIN2722767

## HPCAL1 Protein (Transcript Variant 2) (Myc-DYKDDDDK Tag)



[Go to Product page](#)

### 1 Image

#### Overview

|                               |  |
|-------------------------------|--|
| Quantity:                     | 20 µg  |
| Target:                       | HPCAL1   |
| Protein Characteristics:      | Transcript Variant 2                                   |
| Origin:                       | Human  |
| Source:                       | HEK-293 Cells  |
| Protein Type:                 | Recombinant  |
| Purification tag / Conjugate: | This HPCAL1 protein is labelled with Myc-DYKDDDDK Tag. |
| Application:                  | Antibody Production (AbP), Standard (STD)              |

#### Product Details

|                  |  |
|------------------|--|
| Characteristics: | <ul style="list-style-type: none"> <li>• Recombinant human Hippocalcin-like protein 1 (HPCAL1) (transcript variant 2) protein expressed in HEK293 cells.</li> <li>• Produced with end-sequenced ORF clone</li> </ul> |
| Purity:          | > 80 % as determined by SDS-PAGE and Coomassie blue staining   |

#### Target Details

|                   |  |
|-------------------|--|
| Target:           | HPCAL1   |
| Alternative Name: | Hippocalcin-Like Protein 1 (Hpcal1) ( <a href="#">HPCAL1 Products</a> )  |
| Background:       | The protein encoded by this gene is a member of neuron-specific calcium-binding proteins family found in the retina and brain. It is highly similar to human hippocalcin protein and nearly identical to the rat and mouse hippocalcin like-1 proteins. It may be involved in the calcium- |

Target Details

|                   |   |
|-------------------|---|
|                   | dependent regulation of rhodopsin phosphorylation and may be of relevance for neuronal signalling in the central nervous system. Several alternatively spliced transcript variants encoding the same protein have been found for this gene. |
| Molecular Weight: | 22.1 kDa  |
| NCBI Accession:   | <a href="#">NP_602293</a>   |

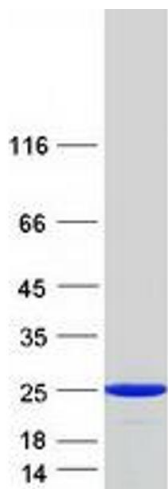
Application Details

|                    |  |
|--------------------|--|
| Application Notes: | Recombinant human proteins can be used for:<br>Native antigens for optimized antibody production<br>Positive controls in ELISA and other antibody assays |
| Comment:           | The tag is located at the C-terminal.  |
| Restrictions:      | For Research Use only  |

Handling

|                  |   |
|------------------|---|
| Concentration:   | 50 µg/mL  |
| Buffer:          | 25 mM Tris.HCl, pH 7.3, 100 mM glycine, 10 % glycerol.  |
| Storage:         | -80 °C  |
| Storage Comment: | Store at -80°C. Thaw on ice, aliquot to individual single-use tubes, and then re-freeze immediately. Only 2-3 freeze thaw cycles are recommended. |

Images



**Western Blotting**

**Image 1.** Validation with Western Blot