

Datasheet for ABIN2722768

## HPCAL1 Protein (Transcript Variant 1) (Myc-DYKDDDDK Tag)



[Go to Product page](#)

### 1 Image

#### Overview

Quantity:	20 µg
Target:	HPCAL1
Protein Characteristics:	Transcript Variant 1
Origin:	Human
Source:	HEK-293 Cells
Protein Type:	Recombinant
Purification tag / Conjugate:	This HPCAL1 protein is labelled with Myc-DYKDDDDK Tag.
Application:	Antibody Production (AbP), Standard (STD)

#### Product Details

Characteristics:	<ul style="list-style-type: none"><li>• Recombinant human Hippocalcin-like protein 1 (HPCAL1) (transcript variant 1) protein expressed in HEK293 cells.</li><li>• Produced with end-sequenced ORF clone</li></ul>
Purity:	> 80 % as determined by SDS-PAGE and Coomassie blue staining

#### Target Details

Target:	HPCAL1
Alternative Name:	Hippocalcin-Like Protein 1 (Hpcal1) ( <a href="#">HPCAL1 Products</a> )
Background:	The protein encoded by this gene is a member of neuron-specific calcium-binding proteins family found in the retina and brain. It is highly similar to human hippocalcin protein and nearly identical to the rat and mouse hippocalcin like-1 proteins. It may be involved in the calcium-

## Target Details

dependent regulation of rhodopsin phosphorylation and may be of relevance for neuronal signalling in the central nervous system. Several alternatively spliced transcript variants encoding the same protein have been found for this gene.

Molecular Weight: 22.1 kDa

NCBI Accession: [NP\\_002140](#)

## Application Details

Application Notes: Recombinant human proteins can be used for:  
Native antigens for optimized antibody production  
Positive controls in ELISA and other antibody assays

Comment: The tag is located at the C-terminal.

Restrictions: For Research Use only

## Handling

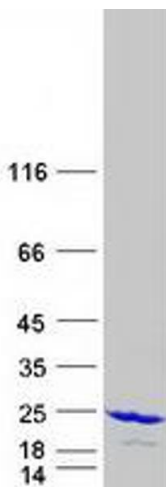
Concentration: 50 µg/mL

Buffer: 25 mM Tris.HCl, pH 7.3, 100 mM glycine, 10 % glycerol.

Storage: -80 °C

Storage Comment: Store at -80°C. Thaw on ice, aliquot to individual single-use tubes, and then re-freeze immediately. Only 2-3 freeze thaw cycles are recommended.

## Images



### Western Blotting

**Image 1.** Validation with Western Blot