

Datasheet for ABIN2723103

anti-HSPA6 antibody**2** Images[Go to Product page](#)

Overview

Quantity:	0.1 mL
Target:	HSPA6
Reactivity:	Human
Host:	Mouse
Clonality:	Monoclonal
Conjugate:	This HSPA6 antibody is un-conjugated
Application:	Western Blotting (WB), Flow Cytometry (FACS), Immunofluorescence (IF)

Product Details

Immunogen:	Full length human recombinant protein of human HSPA6 (NP_002146) produced in HEK293T cell.
Clone:	1E11
Isotype:	IgG2a
Purification:	Purified from mouse ascites fluids by affinity chromatography

Target Details

Target:	HSPA6
Alternative Name:	HSPA6 (HSPA6 Products)
Molecular Weight:	70.8 kDa
Gene ID:	3310

Target Details

NCBI Accession: [NM_002155](#)

HGNC: 3310

Application Details

Application Notes: WB 1:500~2000, IF 1:100, FLOW 1:100

Comment: The concentration of the product may vary between different lots.

Restrictions: For Research Use only

Handling

Format: Liquid

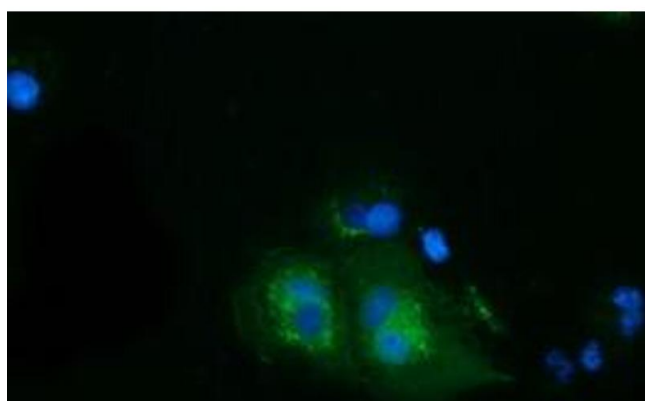
Concentration: 0.5-1.0 mg/mL

Buffer: PBS (PH 7.3) containing 1 % BSA, 50 % glycerol and 0.02 % sodium azide.

Preservative: Sodium azide

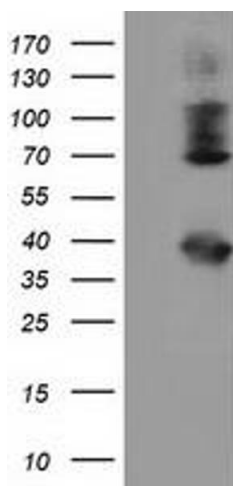
Precaution of Use: This product contains sodium azide: a POISONOUS AND HAZARDOUS SUBSTANCE which should be handled by trained staff only.

Images



Immunofluorescence

Image 1. Anti-HSPA6 mouse monoclonal antibody (ABIN2453153) immunofluorescent staining of COS7 cells transiently transfected by pCMV6-ENTRY HSPA6 (RC207795).



Western Blotting

Image 2. HEK293T cells were transfected with the pCMV6-ENTRY control (Left lane) or pCMV6-ENTRY HSPA6 (Right lane) cDNA for 48 hrs and lysed. Equivalent amounts of cell lysates (5 µg per lane) were separated by SDS-PAGE and immunoblotted with anti-HSPA6.