



[Go to Product page](#)

Datasheet for ABIN2723374

## FIL1d Protein (Transcript Variant 2)

### 1 Image

#### Overview

Quantity:	25 µg
Target:	FIL1d
Protein Characteristics:	Transcript Variant 2
Origin:	Mouse
Source:	Escherichia coli (E. coli)
Protein Type:	Recombinant
Biological Activity:	Active
Application:	Functional Studies (Func), Antibody Production (AbP), Standard (STD), Protein Interaction (PI)

#### Product Details

Specificity:	Optimal preservation of protein structure, post-translational modifications and functions.
Characteristics:	<ul style="list-style-type: none"><li>• Recombinant human IL1F5 / IL1L1 (transcript variant 2) protein expressed in E. coli.</li><li>• Produced with end-sequenced ORF clone</li><li>• Tested for bioactivity.</li></ul>
Purity:	> 95 % as determined by SDS-PAGE and Coomassie blue staining
Endotoxin Level:	Endotoxin level is <0.1 ng/µg of protein (<1EU/µg).
Biological Activity Comment:	Measured by its ability to inhibit IL-36&gamma induced IL-6 production by human PBMCs.

#### Target Details

Target:	FIL1d
---------	-------

## Target Details

Alternative Name: II1f5,il1i1 ([FIL1d Products](#))

Molecular Weight: 17 kDa

NCBI Accession: [NP\\_062324](#)

## Application Details

Application Notes: Recombinant human proteins can be used for:  
Native antigens for optimized antibody production  
Positive controls in ELISA and other antibody assays  
Protein-protein interaction  
In vitro biochemical assays and cell-based functional assays

Restrictions: For Research Use only

## Handling

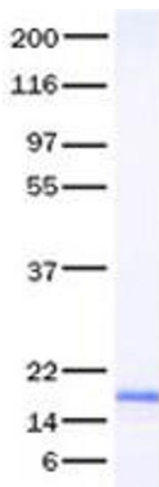
Buffer: Lyophilized from a 0.2  $\mu$ M filtered solution of 20 mM phosphate buffer, 100 mM NaCl, pH 7.2

Handling Advice: Resuspend the protein in the desired concentration in proper buffer

Storage: -80 °C

Storage Comment: Store at -80°C. Thaw on ice, aliquot to individual single-use tubes, and then re-freeze immediately. Only 2-3 freeze thaw cycles are recommended.

## Images



### Western Blotting

**Image 1.** Validation with Western Blot