

Datasheet for ABIN2723409

anti-ILF2 antibody

3 Images

[Go to Product page](#)

Overview

Quantity:	0.1 mL
Target:	ILF2
Reactivity:	Human, Dog
Host:	Mouse
Clonality:	Monoclonal
Application:	Western Blotting (WB), Immunohistochemistry (IHC), Immunofluorescence (IF)

Product Details

Immunogen:	Full-length protein expressed in 293T cell transfected with human ILF2 expression vector
Clone:	6F1
Isotype:	IgG1
Purification:	Purified from mouse ascites fluids by affinity chromatography

Target Details

Target:	ILF2
Alternative Name:	ILF2 (ILF2 Products)
Molecular Weight:	43.1 KDa
Gene ID:	3608
NCBI Accession:	NM_004515
HGNC:	3608

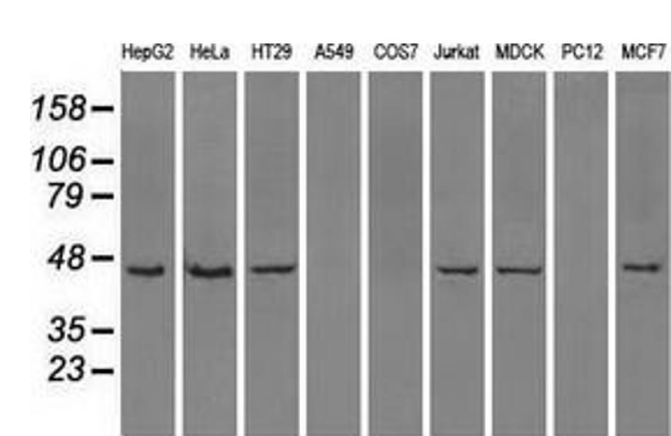
Application Details

Application Notes:	WB 1:500, IHC 1:50, IF 1:100,
Comment:	The concentration of the product may vary between diferrent lots.
Restrictions:	For Research Use only

Handling

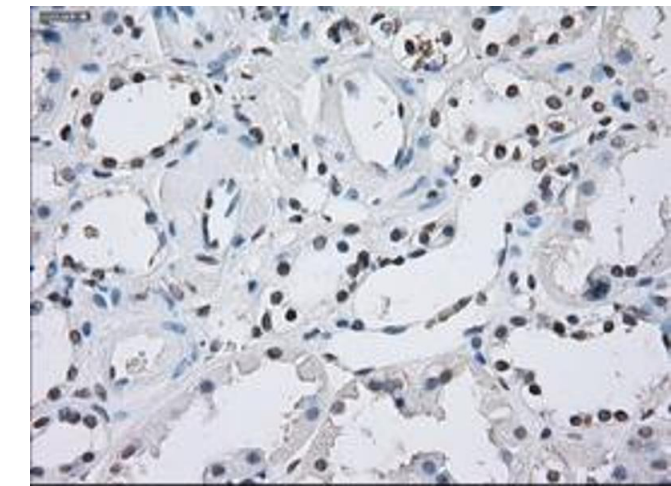
Format:	Liquid
Concentration:	0.5-1.0 mg/mL
Buffer:	PBS (pH 7.3) containing 1 % BSA, 50 % glycerol and 0.02 % sodium azide.
Preservative:	Sodium azide
Precaution of Use:	This product contains sodium azide: a POISONOUS AND HAZARDOUS SUBSTANCE which should be handled by trained staff only.

Images



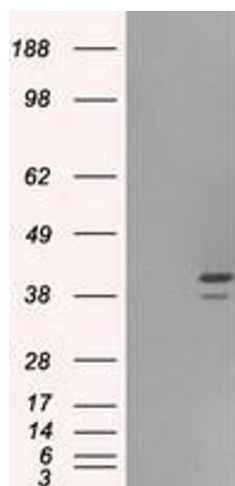
Western Blotting

Image 1. Western blot analysis of extracts (35 µg) from 9 different cell lines by using anti-ILF2 monoclonal antibody.



Immunohistochemistry

Image 2. Immunohistochemical staining of paraffin-embedded Kidney tissue using anti-ILF2 mouse monoclonal antibody. (ABIN2452581, Dilution 1:50)



Western Blotting

Image 3. HEK293T cells were transfected with the pCMV6-ENTRY control (Left lane) or pCMV6-ENTRY ILF2 (Right lane) cDNA for 48 hrs and lysed. Equivalent amounts of cell lysates (5 µg per lane) were separated by SDS-PAGE and immunoblotted with anti-ILF2.