

Datasheet for ABIN2723454

**INHBA Protein**[Go to Product page](#)**1** Image

## Overview

|                      |  |
|----------------------|--|
| Quantity:            | 10 µg  |
| Target:              | INHBA  |
| Origin:              | Human  |
| Source:              | Escherichia coli (E. coli)   |
| Protein Type:        | Recombinant  |
| Biological Activity: | Active   |
| Application:         | Functional Studies (Func), Antibody Production (AbP), Standard (STD), Protein Interaction (PI) |

## Product Details

|                              |  |
|------------------------------|--|
| Specificity:                 | Optimal preservation of protein structure, post-translational modifications and functions.   |
| Characteristics:             | <ul style="list-style-type: none"><li>• Recombinant human Inhibin beta A chain (INHBA) protein expressed in E. coli.</li><li>• Produced with end-sequenced ORF clone</li><li>• Tested for bioactivity.</li></ul> |
| Purity:                      | > 95 % as determined by SDS-PAGE and Coomassie blue staining   |
| Endotoxin Level:             | Endotoxin level is <0.1 ng/µg of protein (<1EU/µg).  |
| Biological Activity Comment: | ED50 was determined by its ability to inhibit the proliferation of murine MPC-11 cells is less than or equal to 2.0 ng/ml, corresponding to a specific activity of > 5 x 10 <sup>5</sup> units/mg.               |

## Target Details

|                   |   |
|-------------------|---|
| Target:           | INHBA   |
| Alternative Name: | Inhibin beta A Chain (Inhba) ( <a href="#">INHBA Products</a> ) |

## Target Details

---

**Background:** This gene encodes a member of the TGF-beta (transforming growth factor-beta) superfamily of proteins. The encoded preproprotein is proteolytically processed to generate a subunit of the dimeric activin and inhibin protein complexes. These complexes activate and inhibit, respectively, follicle stimulating hormone secretion from the pituitary gland. The encoded protein also plays a role in eye, tooth and testis development. Elevated expression of this gene may be associated with cancer cachexia in human patients.

**Molecular Weight:** 26 kDa

**NCBI Accession:** [NP\\_002183](#)

**Pathways:** [Hormone Transport](#), [Peptide Hormone Metabolism](#), [Hormone Activity](#), [Negative Regulation of Hormone Secretion](#), [Autophagy](#)

## Application Details

---

**Application Notes:** Recombinant human proteins can be used for:  
Native antigens for optimized antibody production  
Positive controls in ELISA and other antibody assays  
Protein-protein interaction  
In vitro biochemical assays and cell-based functional assays

**Restrictions:** For Research Use only

## Handling

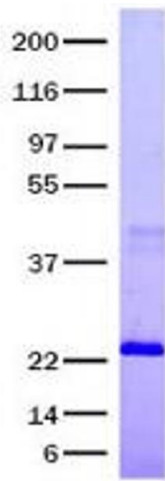
---

**Buffer:** Lyophilized from a 0.2 µM filtered solution of 20 mM phosphate buffer, 100 mM NaCl, pH 7.2

**Handling Advice:** Resuspend the protein in the desired concentration in proper buffer

**Storage:** -80 °C

**Storage Comment:** Store at -80°C. Thaw on ice, aliquot to individual single-use tubes, and then re-freeze immediately. Only 2-3 freeze thaw cycles are recommended.



### Western Blotting

**Image 1.** Validation with Western Blot