



[Go to Product page](#)

Datasheet for ABIN2723532

ITGB6 Protein (Myc-DYKDDDDK Tag)

1 Image

Overview

Quantity:	20 µg
Target:	ITGB6
Origin:	Human
Source:	HEK-293 Cells
Protein Type:	Recombinant
Purification tag / Conjugate:	This ITGB6 protein is labelled with Myc-DYKDDDDK Tag.
Application:	Antibody Production (AbP), Standard (STD)

Product Details

- Characteristics:
- Recombinant human Integrin beta-6 / ITGB6 protein expressed in HEK293 cells.
 - Produced with end-sequenced ORF clone

Purity: > 80 % as determined by SDS-PAGE and Coomassie blue staining

Target Details

Target:	ITGB6
Alternative Name:	Integrin beta-6,itgb6 (ITGB6 Products)
Background:	This gene encodes a protein that is a member of the integrin superfamily. Members of this family are adhesion receptors that function in signaling from the extracellular matrix to the cell. Integrins are heterodimeric integral membrane proteins composed of an alpha chain and a beta chain. The encoded protein forms a dimer with an alpha v chain and this heterodimer can bind to ligands like fibronectin and transforming growth factor beta 1. Alternate splicing results in

Target Details

multiple transcript variants.

Molecular Weight: 85.8 kDa

NCBI Accession: [NP_000879](#)

Application Details

Application Notes: Recombinant human proteins can be used for:
Native antigens for optimized antibody production
Positive controls in ELISA and other antibody assays

Comment: The tag is located at the C-terminal.

Restrictions: For Research Use only

Handling

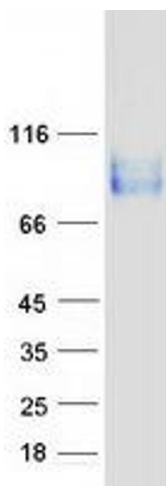
Concentration: 50 µg/mL

Buffer: 25 mM Tris.HCl, pH 7.3, 100 mM glycine, 10 % glycerol.

Storage: -80 °C

Storage Comment: Store at -80°C. Thaw on ice, aliquot to individual single-use tubes, and then re-freeze immediately. Only 2-3 freeze thaw cycles are recommended.

Images



Western Blotting

Image 1. Validation with Western Blot