

Datasheet for ABIN2723763

Intrinsic Factor Protein (Myc-DYKDDDDK Tag)**1** Image[Go to Product page](#)

Overview

Quantity:	20 µg
Target:	Intrinsic Factor (GIF)
Origin:	Human
Source:	HEK-293 Cells
Protein Type:	Recombinant
Purification tag / Conjugate:	This Intrinsic Factor protein is labelled with Myc-DYKDDDDK Tag.
Application:	Antibody Production (AbP), Standard (STD)

Product Details

Characteristics:	<ul style="list-style-type: none">• Recombinant human Intrinsic factor protein expressed in HEK293 cells.• Produced with end-sequenced ORF clone
Purity:	> 80 % as determined by SDS-PAGE and Coomassie blue staining

Target Details

Target:	Intrinsic Factor (GIF)
Alternative Name:	Intrinsic Factor (GIF Products)
Background:	Promotes absorption of the essential vitamin cobalamin (Cbl) in the ileum. After interaction with CUBN, the GIF-cobalamin complex is internalized via receptor-mediated endocytosis. [UniProtKB/Swiss-Prot Function]
Molecular Weight:	43.4 kDa

Target Details

NCBI Accession: [NP_005133](#)

Application Details

Application Notes: Recombinant human proteins can be used for:
Native antigens for optimized antibody production
Positive controls in ELISA and other antibody assays

Comment: The tag is located at the C-terminal.

Restrictions: For Research Use only

Handling

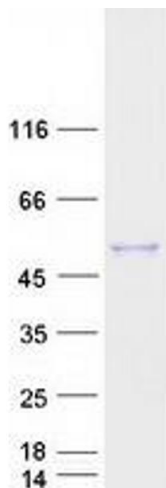
Concentration: 50 µg/mL

Buffer: 25 mM Tris.HCl, pH 7.3, 100 mM glycine, 10 % glycerol.

Storage: -80 °C

Storage Comment: Store at -80°C. Thaw on ice, aliquot to individual single-use tubes, and then re-freeze immediately. Only 2-3 freeze thaw cycles are recommended.

Images



Western Blotting

Image 1. Validation with Western Blot