

Datasheet for ABIN2723772

IPP Isomerase 2 Protein (IDI2) (Myc-DYKDDDDK Tag)[Go to Product page](#)**1** Image

Overview

Quantity:	20 µg
Target:	IPP Isomerase 2 (IDI2)
Origin:	Human
Source:	HEK-293 Cells
Protein Type:	Recombinant
Purification tag / Conjugate:	This IPP Isomerase 2 protein is labelled with Myc-DYKDDDDK Tag.
Application:	Antibody Production (AbP), Standard (STD)

Product Details

Characteristics:	<ul style="list-style-type: none">• Recombinant human IPP isomerase 2 / IDI2 protein expressed in HEK293 cells.• Produced with end-sequenced ORF clone
Purity:	> 80 % as determined by SDS-PAGE and Coomassie blue staining

Target Details

Target:	IPP Isomerase 2 (IDI2)
Alternative Name:	Ipp Isomerase 2,idi2 (IDI2 Products)
Background:	The protein encoded by this gene catalyzes the conversion of isopentenyl diphosphate to dimethylallyl diphosphate, which is a precursor for the synthesis of cholesterol and other isoprenoids. This gene, which is a product of an ancestral gene duplication event, encodes a protein that may be involved in the aggregation of alpha-synuclein in the cerebral cortex of patients with Lewy body disease. In addition, segmental copy number gains in this locus have

Target Details

	been associated with sporadic amyotrophic lateral sclerosis.
Molecular Weight:	26.6 kDa
NCBI Accession:	NP_150286

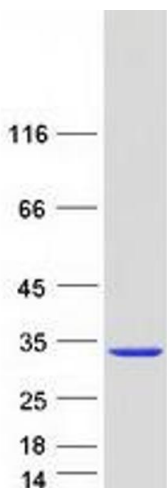
Application Details

Application Notes:	Recombinant human proteins can be used for: Native antigens for optimized antibody production Positive controls in ELISA and other antibody assays
Comment:	The tag is located at the C-terminal.
Restrictions:	For Research Use only

Handling

Concentration:	50 µg/mL
Buffer:	25 mM Tris.HCl, pH 7.3, 100 mM glycine, 10 % glycerol.
Storage:	-80 °C
Storage Comment:	Store at -80°C. Thaw on ice, aliquot to individual single-use tubes, and then re-freeze immediately. Only 2-3 freeze thaw cycles are recommended.

Images



Western Blotting

Image 1. Validation with Western Blot