

Datasheet for ABIN2723954

Junctophilin 2 Protein (JPH2) (Transcript Variant 1) (Myc-DYKDDDDK Tag)[Go to Product page](#)**1** Image

Overview

Quantity:	20 µg
Target:	Junctophilin 2 (JPH2)
Protein Characteristics:	Transcript Variant 1
Origin:	Human
Source:	HEK-293 Cells
Protein Type:	Recombinant
Purification tag / Conjugate:	This Junctophilin 2 protein is labelled with Myc-DYKDDDDK Tag.
Application:	Antibody Production (AbP), Standard (STD)

Product Details

Characteristics:	<ul style="list-style-type: none">• Recombinant human Junctophilin-2 / JPH2 (transcript variant 1) protein expressed in HEK293 cells.• Produced with end-sequenced ORF clone
Purity:	> 80 % as determined by SDS-PAGE and Coomassie blue staining

Target Details

Target:	Junctophilin 2 (JPH2)
Alternative Name:	Junctophilin-2,jph2 (JPH2 Products)
Background:	Junctional complexes between the plasma membrane and endoplasmic/sarcoplasmic reticulum are a common feature of all excitable cell types and mediate cross talk between cell surface and intracellular ion channels. The protein encoded by this gene is a component of

Target Details

junctional complexes and is composed of a C-terminal hydrophobic segment spanning the endoplasmic/sarcoplasmic reticulum membrane and a remaining cytoplasmic domain that shows specific affinity for the plasma membrane. This gene is a member of the junctophilin gene family. Alternative splicing has been observed at this locus and two variants encoding distinct isoforms are described.

Molecular Weight: 74 kDa

NCBI Accession: [NP_065166](#)

Application Details

Application Notes: Recombinant human proteins can be used for:
Native antigens for optimized antibody production
Positive controls in ELISA and other antibody assays

Comment: The tag is located at the C-terminal.

Restrictions: For Research Use only

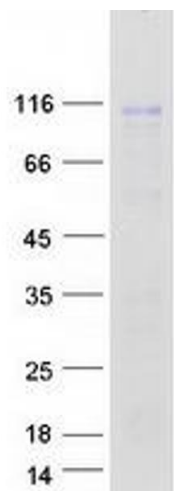
Handling

Concentration: 50 µg/mL

Buffer: 25 mM Tris.HCl, pH 7.3, 100 mM glycine, 10 % glycerol.

Storage: -80 °C

Storage Comment: Store at -80°C. Thaw on ice, aliquot to individual single-use tubes, and then re-freeze immediately. Only 2-3 freeze thaw cycles are recommended.



Western Blotting

Image 1. Validation with Western Blot