



Datasheet for ABIN2723968

## Prostate Specific Antigen Protein (PSA) (Transcript Variant 3) (His tag)



[Go to Product page](#)

### 1 Image

#### Overview

Quantity:	10 µg
Target:	Prostate Specific Antigen (PSA)
Protein Characteristics:	Transcript Variant 3
Origin:	Human
Source:	HEK-293 Cells
Protein Type:	Recombinant
Purification tag / Conjugate:	This Prostate Specific Antigen protein is labelled with His tag.
Application:	Antibody Production (AbP), Standard (STD)

#### Product Details

Characteristics:	<ul style="list-style-type: none"><li>• Recombinant human Kallikrein-3 / PSA / KLK3 (transcript variant 3) protein expressed in HEK293 cells.</li><li>• Produced with end-sequenced ORF clone</li></ul>
Purity:	> 95 % as determined by SDS-PAGE and Coomassie blue staining
Endotoxin Level:	< 0.1 EU per µg protein as determined by LAL test

#### Target Details

Target:	Prostate Specific Antigen (PSA)
Alternative Name:	Kallikrein-3,psa,klk3 ( <a href="#">PSA Products</a> )
Background:	Kallikreins are a subgroup of serine proteases having diverse physiological functions. Growing evidence suggests that many kallikreins are implicated in carcinogenesis and some have

## Target Details

---

potential as novel cancer and other disease biomarkers. This gene is one of the fifteen kallikrein subfamily members located in a cluster on chromosome 19. Its protein product is a protease present in seminal plasma. It is thought to function normally in the liquefaction of seminal coagulum, presumably by hydrolysis of the high molecular mass seminal vesicle protein. Serum level of this protein, called PSA in the clinical setting, is useful in the diagnosis and monitoring of prostatic carcinoma. Alternate splicing of this gene generates several transcript variants encoding different isoforms.

---

Molecular Weight: 27.9 kDa

---

NCBI Accession: [NP\\_001025218](#)

---

Pathways: [Complement System](#)

## Application Details

---

Application Notes: Recombinant human proteins can be used for:  
Native antigens for optimized antibody production  
Positive controls in ELISA and other antibody assays

---

Comment: The tag is located at the C-terminal.

---

Restrictions: For Research Use only

## Handling

---

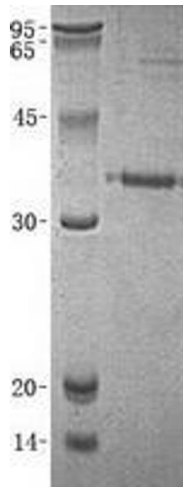
Buffer: Lyophilized from a 0.2  $\mu$ M filtered solution of 20 mM MES, 150 mM NaCl, 2 mM CaCl<sub>2</sub>, pH 6.0.  
Stable for at least 6 months from date of receipt under proper storage and handling conditions.

---

Storage: -80 °C

---

Storage Comment: Store at -80°C. Thaw on ice, aliquot to individual single-use tubes, and then re-freeze immediately. Only 2-3 freeze thaw cycles are recommended.



### Western Blotting

**Image 1.** Validation with Western Blot