

Datasheet for ABIN2723969

**Kallikrein 8 Protein (KLK8) (DYKDDDDK Tag)**[Go to Product page](#)**1** Image

## Overview

Quantity:	20 µg
Target:	Kallikrein 8 (KLK8)
Origin:	Human
Source:	Insect cells (Sf9)
Protein Type:	Recombinant
Purification tag / Conjugate:	This Kallikrein 8 protein is labelled with DYKDDDDK Tag.
Application:	Antibody Production (AbP), Standard (STD)

## Product Details

Characteristics:	<ul style="list-style-type: none"><li>• Recombinant human Kallikrein-related peptidase 8 (KLK8), transcript variant 1, residues 33-260aa, with C-terminal DDK tag, expressed in sf9 cells. (C-term DDK tag, transcript variant 1) protein expressed in Sf9 cells.</li><li>• Produced with end-sequenced ORF clone</li></ul>
Purity:	> 80 % as determined by SDS-PAGE and Coomassie blue staining

## Target Details

Target:	Kallikrein 8 (KLK8)
Alternative Name:	Kallikrein-Related Peptidase 8 (Klk8) ( <a href="#">KLK8 Products</a> )
Background:	Kallikreins are a subgroup of serine proteases having diverse physiological functions. Growing evidence suggests that many kallikreins are implicated in carcinogenesis and some have potential as novel cancer and other disease biomarkers. This gene is one of the fifteen kallikrein

## Target Details

subfamily members located in tandem in a gene cluster on chromosome 19. The encoded protein may be involved in proteolytic cascade in the skin and may serve as a biomarker for ovarian cancer. Alternate splicing of this gene results in multiple transcript variants encoding different isoforms.

Molecular Weight: 25 kDa

NCBI Accession: [NP\\_007187](#)

Pathways: [Complement System](#)

## Application Details

Application Notes: Recombinant human proteins can be used for:  
Native antigens for optimized antibody production  
Positive controls in ELISA and other antibody assays

Comment: The tag is located at the C-terminal.

Restrictions: For Research Use only

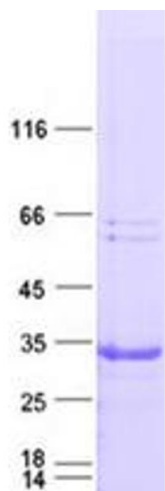
## Handling

Concentration: 50 µg/mL

Buffer: 50 mM Tris-HCl pH 8.0, 150 mM NaCl, 10 % glycerol. Store at -80°C. Avoid repeated freeze-thaw cycles. Stable for at least 3 months from receipt of products under proper storage and handling conditions.

Storage: -80 °C

Storage Comment: Store at -80°C. Thaw on ice, aliquot to individual single-use tubes, and then re-freeze immediately. Only 2-3 freeze thaw cycles are recommended.



Western Blotting

**Image 1.** Validation with Western Blot