

Datasheet for ABIN2724018

KCNE1-Like Protein (KCNE1L) (Myc-DYKDDDDK Tag)[Go to Product page](#)**1** Image

Overview

Quantity:	20 µg
Target:	KCNE1-Like (KCNE1L)
Origin:	Human
Source:	HEK-293 Cells
Protein Type:	Recombinant
Purification tag / Conjugate:	This KCNE1-Like protein is labelled with Myc-DYKDDDDK Tag.
Application:	Antibody Production (AbP), Standard (STD)

Product Details

Characteristics:	<ul style="list-style-type: none">• Recombinant human KCNE1L protein expressed in HEK293 cells.• Produced with end-sequenced ORF clone
Purity:	> 80 % as determined by SDS-PAGE and Coomassie blue staining

Target Details

Target:	KCNE1-Like (KCNE1L)
Alternative Name:	Kcne1l (KCNE1L Products)
Background:	This gene encodes a member of a family of single pass transmembrane domain proteins that function as ancillary subunits to voltage-gated potassium channels. Members of this family affect diverse processes in potassium channel regulation, including ion selectivity, voltage dependence, and anterograde recycling from the plasma membrane. Variants of this gene are associated with idiopathic ventricular fibrillation and Brugada syndrome.

Target Details

Molecular Weight:	14.8 kDa
NCBI Accession:	NP_036414

Application Details

Application Notes:	Recombinant human proteins can be used for: Native antigens for optimized antibody production Positive controls in ELISA and other antibody assays
--------------------	--

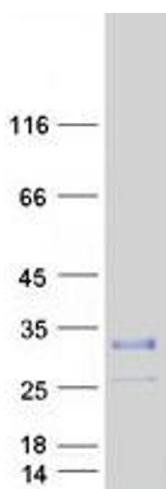
Comment:	The tag is located at the C-terminal.
----------	---------------------------------------

Restrictions:	For Research Use only
---------------	-----------------------

Handling

Concentration:	50 µg/mL
Buffer:	25 mM Tris.HCl, pH 7.3, 100 mM glycine, 10 % glycerol.
Storage:	-80 °C
Storage Comment:	Store at -80°C. Thaw on ice, aliquot to individual single-use tubes, and then re-freeze immediately. Only 2-3 freeze thaw cycles are recommended.

Images



Western Blotting

Image 1. Validation with Western Blot