



[Go to Product page](#)

Datasheet for ABIN2724083
KCTD7 Protein (His tag)

1 Image

Overview

Quantity:	50 µg
Target:	KCTD7
Origin:	Human
Source:	Escherichia coli (E. coli)
Protein Type:	Recombinant
Purification tag / Conjugate:	This KCTD7 protein is labelled with His tag.
Application:	Antibody Production (AbP), Standard (STD)

Product Details

Characteristics:	<ul style="list-style-type: none">• Recombinant human KCTD7 (full length, N-term HIS tag, transcript variant 1) protein expressed in E.coli.• Produced with end-sequenced ORF clone
------------------	--

Purity:	> 80 % as determined by SDS-PAGE and Coomassie blue staining
---------	--

Target Details

Target:	KCTD7
Alternative Name:	Kctd7 (KCTD7 Products)
Background:	This gene encodes a member of the potassium channel tetramerization domain-containing protein family. Family members are identified on a structural basis and contain an amino-terminal domain similar to the T1 domain present in the voltage-gated potassium channel. Mutations in this gene have been associated with progressive myoclonic epilepsy-3. Alternative

Target Details

splicing results in multiple transcript variants.[provided by RefSeq, Jan 2011].

Molecular Weight: 33 kDa

NCBI Accession: [NP_694578](#)

Application Details

Application Notes: Recombinant human proteins can be used for:
Native antigens for optimized antibody production
Positive controls in ELISA and other antibody assays

Comment: The tag is located at the N-terminal.

Restrictions: For Research Use only

Handling

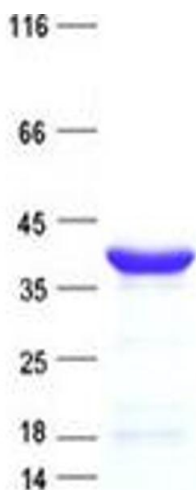
Concentration: 50 µg/mL

Buffer: 25 mM Tris, pH 8.0, 150 mM NaCl, 10 % glycerol, 1 % Sarkosyl.

Storage: -80 °C

Storage Comment: Store at -80°C. Thaw on ice, aliquot to individual single-use tubes, and then re-freeze immediately. Only 2-3 freeze thaw cycles are recommended.

Images



Western Blotting

Image 1. Validation with Western Blot