

Datasheet for ABIN2724118
KLHL17 Protein (Myc-DYKDDDDK Tag)



[Go to Product page](#)

1 Image

Overview

Quantity:	20 µg
Target:	KLHL17
Origin:	Human
Source:	HEK-293 Cells
Protein Type:	Recombinant
Purification tag / Conjugate:	This KLHL17 protein is labelled with Myc-DYKDDDDK Tag.
Application:	Antibody Production (AbP), Standard (STD)

Product Details

- Characteristics:
- Recombinant human Kelch-like protein 17 protein expressed in HEK293 cells.
 - Produced with end-sequenced ORF clone

Purity: > 80 % as determined by SDS-PAGE and Coomassie blue staining

Target Details

Target:	KLHL17
Alternative Name:	Kelch-Like Protein 17 (KLHL17 Products)
Background:	The protein encoded by this gene is expressed in neurons of most regions of the brain. It contains an N-terminal BTB domain, which mediates dimerization of the protein, and a C-terminal Kelch domain, which mediates binding to F-actin. This protein may play a key role in the regulation of actin-based neuronal function.
Molecular Weight:	69.7 kDa

Target Details

NCBI Accession: [NP_938073](#)

Pathways: [Synaptic Membrane](#)

Application Details

Application Notes: Recombinant human proteins can be used for:
Native antigens for optimized antibody production
Positive controls in ELISA and other antibody assays

Comment: The tag is located at the C-terminal.

Restrictions: For Research Use only

Handling

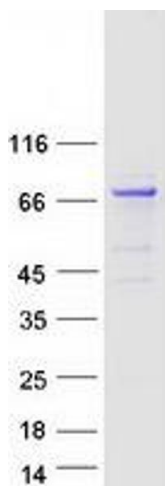
Concentration: 50 µg/mL

Buffer: 25 mM Tris.HCl, pH 7.3, 100 mM glycine, 10 % glycerol.

Storage: -80 °C

Storage Comment: Store at -80°C. Thaw on ice, aliquot to individual single-use tubes, and then re-freeze immediately. Only 2-3 freeze thaw cycles are recommended.

Images



Western Blotting

Image 1. Validation with Western Blot