

Datasheet for ABIN2724300

**KLF9 Protein (His tag)**[Go to Product page](#)**1** Image

## Overview

Quantity:	50 µg
Target:	KLF9
Origin:	Human
Source:	Escherichia coli (E. coli)
Protein Type:	Recombinant
Purification tag / Conjugate:	This KLF9 protein is labelled with His tag.
Application:	Antibody Production (AbP), Standard (STD)

## Product Details

Characteristics:	<ul style="list-style-type: none"><li>• Recombinant human KLF9 (full length, N-term HIS tag) protein expressed in E. coli.</li><li>• Produced with end-sequenced ORF clone</li></ul>
Purity:	> 80 % as determined by SDS-PAGE and Coomassie blue staining

## Target Details

Target:	KLF9
Alternative Name:	Klf9 ( <a href="#">KLF9 Products</a> )
Background:	The protein encoded by this gene is a transcription factor that binds to GC box elements located in the promoter. Binding of the encoded protein to a single GC box inhibits mRNA expression while binding to tandemly repeated GC box elements activates transcription.
Molecular Weight:	27.1 kDa

## Target Details

NCBI Accession:	<a href="#">NP_001197</a>
Pathways:	<a href="#">Intracellular Steroid Hormone Receptor Signaling Pathway</a>

## Application Details

Application Notes:	Recombinant human proteins can be used for: Native antigens for optimized antibody production Positive controls in ELISA and other antibody assays
--------------------	--

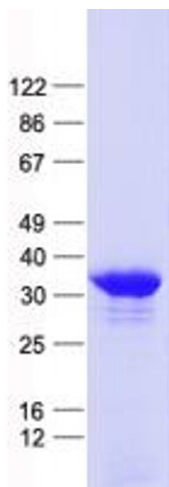
Comment:	The tag is located at the N-terminal.
----------	---------------------------------------

Restrictions:	For Research Use only
---------------	-----------------------

## Handling

Concentration:	50 µg/mL
Buffer:	25 mM Tris, pH 8.0, 150 mM NaCl, 10 % glycerol, 1 % Sarkosyl. Store at -80C. Avoid repeated freeze-thaw cycles. Stable for at least 3 months from receipt of products under proper storage and handling conditions.
Storage:	-80 °C
Storage Comment:	Store at -80°C. Thaw on ice, aliquot to individual single-use tubes, and then re-freeze immediately. Only 2-3 freeze thaw cycles are recommended.

## Images



### Western Blotting

**Image 1.** Validation with Western Blot