

Datasheet for ABIN2724312
Kallikrein 1 Protein (KLK1)



[Go to Product page](#)

1 Image

Overview

Quantity:	10 µg
Target:	Kallikrein 1 (KLK1)
Origin:	Human
Source:	HEK-293 Cells
Protein Type:	Recombinant
Application:	Antibody Production (AbP), Standard (STD)

Product Details

Characteristics:	<ul style="list-style-type: none">• Recombinant human KLK1 / Kallikrein-1 protein expressed in HEK293 cells.• Produced with end-sequenced ORF clone
Purity:	> 95 % as determined by SDS-PAGE and Coomassie blue staining
Endotoxin Level:	< 0.1 EU per µg protein as determined by LAL test

Target Details

Target:	Kallikrein 1 (KLK1)
Alternative Name:	Klk1,kallikrein-1 (KLK1 Products)
Background:	Kallikreins are a subgroup of serine proteases having diverse physiological functions. Growing evidence suggests that many kallikreins are implicated in carcinogenesis and some have potential as novel cancer and other disease biomarkers. This gene is one of the fifteen kallikrein subfamily members located in a cluster on chromosome 19. This protein is functionally conserved in its capacity to release the vasoactive peptide, Lys-bradykinin, from low molecular

Target Details

	weight kininogen.
Molecular Weight:	28.1 kDa
NCBI Accession:	NP_002248
Pathways:	Complement System

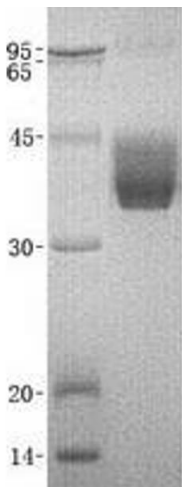
Application Details

Application Notes:	Recombinant human proteins can be used for: Native antigens for optimized antibody production Positive controls in ELISA and other antibody assays
Restrictions:	For Research Use only

Handling

Concentration:	50 µg/mL
Buffer:	20 mM Tris-HCl, 150 mM NaCl, 2 mM CaCl ₂ , pH 8.0. Avoid repeated freeze-thaw cycles. Stable for at least 3 months from receipt of products under proper storage and handling conditions.
Storage:	-80 °C
Storage Comment:	Store at -80°C. Thaw on ice, aliquot to individual single-use tubes, and then re-freeze immediately. Only 2-3 freeze thaw cycles are recommended.

Images



Western Blotting

Image 1. Validation with Western Blot