

Datasheet for ABIN2724316

## Kallikrein 11 Protein (KLK11) (Transcript Variant 2) (Myc-DYKDDDDK Tag)



[Go to Product page](#)

### 1 Image

#### Overview

Quantity:	20 µg
Target:	Kallikrein 11 (KLK11)
Protein Characteristics:	Transcript Variant 2
Origin:	Human
Source:	HEK-293 Cells
Protein Type:	Recombinant
Purification tag / Conjugate:	This Kallikrein 11 protein is labelled with Myc-DYKDDDDK Tag.
Application:	Antibody Production (AbP), Standard (STD)

#### Product Details

Characteristics:	<ul style="list-style-type: none"><li>• Recombinant human KLK11 / Kallikrein-11 (transcript variant 2) protein expressed in HEK293 cells.</li><li>• Produced with end-sequenced ORF clone</li></ul>
Purity:	> 80 % as determined by SDS-PAGE and Coomassie blue staining

#### Target Details

Target:	Kallikrein 11 (KLK11)
Alternative Name:	Klk11,kallikrein-11 ( <a href="#">KLK11 Products</a> )
Background:	Kallikreins are a subgroup of serine proteases having diverse physiological functions. Growing evidence suggests that many kallikreins are implicated in carcinogenesis and some have potential as novel cancer and other disease biomarkers. This gene is one of the fifteen kallikrein

## Target Details

subfamily members located in a cluster on chromosome 19. Alternate splicing and the use of alternate promoters results in multiple transcript variants encoding distinct isoforms which are differentially expressed.

Molecular Weight: 30.9 kDa

NCBI Accession: [NP\\_659196](#)

Pathways: [Complement System](#)

## Application Details

Application Notes: Recombinant human proteins can be used for:  
Native antigens for optimized antibody production  
Positive controls in ELISA and other antibody assays

Comment: The tag is located at the C-terminal.

Restrictions: For Research Use only

## Handling

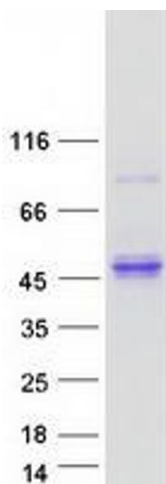
Concentration: 50 µg/mL

Buffer: 25 mM Tris.HCl, pH 7.3, 100 mM glycine, 10 % glycerol.

Storage: -80 °C

Storage Comment: Store at -80°C. Thaw on ice, aliquot to individual single-use tubes, and then re-freeze immediately. Only 2-3 freeze thaw cycles are recommended.

## Images



### Western Blotting

**Image 1.** Validation with Western Blot