



[Go to Product page](#)

Datasheet for ABIN2724424

## KREMEN2 Protein (Transcript Variant 2) (Myc-DYKDDDDK Tag)

### 1 Image

#### Overview

Quantity:	20 µg
Target:	KREMEN2
Protein Characteristics:	Transcript Variant 2
Origin:	Human
Source:	HEK-293 Cells
Protein Type:	Recombinant
Purification tag / Conjugate:	This KREMEN2 protein is labelled with Myc-DYKDDDDK Tag.
Application:	Antibody Production (AbP), Standard (STD)

#### Product Details

Characteristics:	<ul style="list-style-type: none"><li>• Recombinant human Kremen protein 2 (transcript variant 2) protein expressed in HEK293 cells.</li><li>• Produced with end-sequenced ORF clone</li></ul>
Purity:	> 80 % as determined by SDS-PAGE and Coomassie blue staining

#### Target Details

Target:	KREMEN2
Alternative Name:	Kremen Protein 2 ( <a href="#">KREMEN2 Products</a> )
Background:	This gene encodes a high-affinity dickkopf homolog 1 (DKK1) transmembrane receptor. A similar protein in mouse functions interacts with with DKK1 to block wingless (WNT)/beta-catenin signaling. The encoded protein forms a ternary membrane complex with DKK1 and the

## Target Details

---

WNT receptor lipoprotein receptor-related protein 6 (LRP6), and induces rapid endocytosis and removal of LRP6 from the plasma membrane. It contains extracellular kringle, WSC, and CUB domains. Alternatively spliced transcript variants encoding distinct isoforms have been observed for this gene.

Molecular Weight: 42.3 kDa

NCBI Accession: [NP\\_078783](#)

Pathways: [WNT Signaling](#)

## Application Details

---

Application Notes: Recombinant human proteins can be used for:  
Native antigens for optimized antibody production  
Positive controls in ELISA and other antibody assays

Comment: The tag is located at the C-terminal.

Restrictions: For Research Use only

## Handling

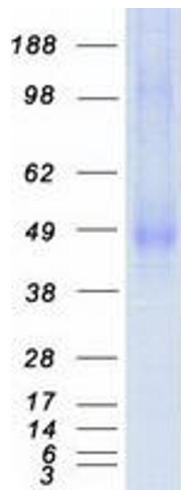
---

Concentration: 50 µg/mL

Buffer: 25 mM Tris.HCl, pH 7.3, 100 mM glycine, 10 % glycerol.

Storage: -80 °C

Storage Comment: Store at -80°C. Thaw on ice, aliquot to individual single-use tubes, and then re-freeze immediately. Only 2-3 freeze thaw cycles are recommended.



### Western Blotting

**Image 1.** Validation with Western Blot