

Datasheet for ABIN2724511

**Ceramide Synthase 2 Protein (CERS2) (Transcript Variant 2)
(Myc-DYKDDDDK Tag)**[Go to Product page](#)**1** Image

Overview

Quantity:	20 µg
Target:	Ceramide Synthase 2 (CERS2)
Protein Characteristics:	Transcript Variant 2
Origin:	Human
Source:	HEK-293 Cells
Protein Type:	Recombinant
Purification tag / Conjugate:	This Ceramide Synthase 2 protein is labelled with Myc-DYKDDDDK Tag.
Application:	Antibody Production (AbP), Standard (STD)

Product Details

Characteristics:	<ul style="list-style-type: none">• Recombinant human LASS2 (transcript variant 2) protein expressed in HEK293 cells.• Produced with end-sequenced ORF clone
Purity:	> 80 % as determined by SDS-PAGE and Coomassie blue staining

Target Details

Target:	Ceramide Synthase 2 (CERS2)
Alternative Name:	Lass2 (CERS2 Products)
Background:	<p>This gene encodes a protein that has sequence similarity to yeast longevity assurance gene 1. Mutation or overexpression of the related gene in yeast has been shown to alter yeast lifespan. The human protein may play a role in the regulation of cell growth. Alternatively spliced transcript variants encoding the same protein have been described.</p>

Target Details

Molecular Weight:	44.7 kDa
NCBI Accession:	NP_071358

Application Details

Application Notes:	Recombinant human proteins can be used for: Native antigens for optimized antibody production Positive controls in ELISA and other antibody assays
--------------------	--

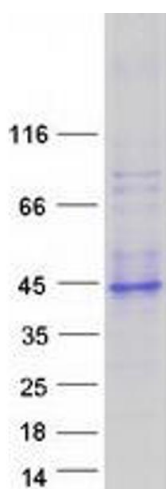
Comment:	The tag is located at the C-terminal.
----------	---------------------------------------

Restrictions:	For Research Use only
---------------	-----------------------

Handling

Concentration:	50 µg/mL
Buffer:	25 mM Tris.HCl, pH 7.3, 100 mM glycine, 10 % glycerol.
Storage:	-80 °C
Storage Comment:	Store at -80°C. Thaw on ice, aliquot to individual single-use tubes, and then re-freeze immediately. Only 2-3 freeze thaw cycles are recommended.

Images



Western Blotting

Image 1. Validation with Western Blot