



[Go to Product page](#)

Datasheet for ABIN2724513

LASS3 Protein (Myc-DYKDDDDK Tag)

1 Image

Overview

Quantity:	20 µg
Target:	LASS3 (CERS3)
Origin:	Human
Source:	HEK-293 Cells
Protein Type:	Recombinant
Purification tag / Conjugate:	This LASS3 protein is labelled with Myc-DYKDDDDK Tag.
Application:	Antibody Production (AbP), Standard (STD)

Product Details

Characteristics:	<ul style="list-style-type: none">• Recombinant human LASS3 protein expressed in HEK293 cells.• Produced with end-sequenced ORF clone
------------------	--

Purity:	> 80 % as determined by SDS-PAGE and Coomassie blue staining
---------	--

Target Details

Target:	LASS3 (CERS3)
---------	---------------

Alternative Name:	Lass3 (CERS3 Products)
-------------------	--

Background:	This gene is a member of the ceramide synthase family of genes. The ceramide synthase enzymes regulate sphingolipid synthesis by catalyzing the formation of ceramides from sphingoid base and acyl-coA substrates. This family member is involved in the synthesis of ceramides with ultra-long-chain acyl moieties (ULC-Cers), important to the epidermis in its role in creating a protective barrier from the environment. The protein encoded by this gene has also
-------------	--

Target Details

been implicated in modification of the lipid structures required for spermatogenesis. Mutations in this gene have been associated with male fertility defects, and epidermal defects, including ichthyosis. Alternative splicing results in multiple transcript variants encoding different isoforms.

Molecular Weight: 46.1 kDa

NCBI Accession: [NP_849164](#)

Application Details

Application Notes: Recombinant human proteins can be used for:
Native antigens for optimized antibody production
Positive controls in ELISA and other antibody assays

Comment: The tag is located at the C-terminal.

Restrictions: For Research Use only

Handling

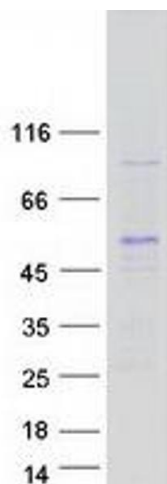
Concentration: 50 µg/mL

Buffer: 25 mM Tris.HCl, pH 7.3, 100 mM glycine, 10 % glycerol.

Storage: -80 °C

Storage Comment: Store at -80°C. Thaw on ice, aliquot to individual single-use tubes, and then re-freeze immediately. Only 2-3 freeze thaw cycles are recommended.

Images



Western Blotting

Image 1. Validation with Western Blot