



[Go to Product page](#)

Datasheet for ABIN2724532

Lbx1 Protein (Myc-DYKDDDDK Tag)

1 Image

Overview

Quantity:	20 µg
Target:	Lbx1
Origin:	Human
Source:	HEK-293 Cells
Protein Type:	Recombinant
Purification tag / Conjugate:	This Lbx1 protein is labelled with Myc-DYKDDDDK Tag.
Application:	Antibody Production (AbP), Standard (STD)

Product Details

Characteristics:	<ul style="list-style-type: none">• Recombinant human LBX1 protein expressed in HEK293 cells.• Produced with end-sequenced ORF clone
Purity:	> 80 % as determined by SDS-PAGE and Coomassie blue staining

Target Details

Target:	Lbx1
Alternative Name:	Lbx1 (Lbx1 Products)
Background:	This gene and the orthologous mouse gene were found by their homology to the Drosophila lady bird early and late homeobox genes. In the mouse, this gene is a key regulator of muscle precursor cell migration and is required for the acquisition of dorsal identities of forelimb muscles.
Molecular Weight:	30 kDa

Target Details

NCBI Accession: [NP_006553](#)

Application Details

Application Notes: Recombinant human proteins can be used for:
Native antigens for optimized antibody production
Positive controls in ELISA and other antibody assays

Comment: The tag is located at the C-terminal.

Restrictions: For Research Use only

Handling

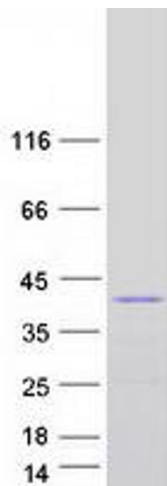
Concentration: 50 µg/mL

Buffer: 25 mM Tris.HCl, pH 7.3, 100 mM glycine, 10 % glycerol.

Storage: -80 °C

Storage Comment: Store at -80°C. Thaw on ice, aliquot to individual single-use tubes, and then re-freeze immediately. Only 2-3 freeze thaw cycles are recommended.

Images



Western Blotting

Image 1. Validation with Western Blot