

Datasheet for ABIN2724553

## LCMT1 Protein (Transcript Variant 1) (Myc-DYKDDDDK Tag)



[Go to Product page](#)

### 1 Image

#### Overview

|                               |   |
|-------------------------------|---|
| Quantity:                     | 20 µg   |
| Target:                       | LCMT1   |
| Protein Characteristics:      | Transcript Variant 1                                  |
| Origin:                       | Human   |
| Source:                       | HEK-293 Cells   |
| Protein Type:                 | Recombinant   |
| Purification tag / Conjugate: | This LCMT1 protein is labelled with Myc-DYKDDDDK Tag. |
| Application:                  | Antibody Production (AbP), Standard (STD)             |

#### Product Details

- Characteristics:
- Recombinant human LCMT1 (transcript variant 1) protein expressed in HEK293 cells.
  - Produced with end-sequenced ORF clone

Purity: > 80 % as determined by SDS-PAGE and Coomassie blue staining

#### Target Details

|                   |  |
|-------------------|--|
| Target:           | LCMT1  |
| Alternative Name: | Lcmt1 ( <a href="#">LCMT1 Products</a> )   |
| Background:       | LCMT1 catalyzes the methylation of the carboxyl group of the C-terminal leucine residue (Ieu309) of the catalytic subunit of protein phosphatase-2A (PPP2CA MIM 176915) (De Baere et al., 1999 [PubMed 10600115]).[supplied by OMIM, Mar 2008] |

## Target Details

Molecular Weight: 38.2 kDa

NCBI Accession: [NP\\_057393](#)

## Application Details

Application Notes: Recombinant human proteins can be used for:  
Native antigens for optimized antibody production  
Positive controls in ELISA and other antibody assays

Comment: The tag is located at the C-terminal.

Restrictions: For Research Use only

## Handling

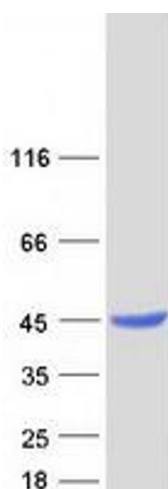
Concentration: 50 µg/mL

Buffer: 25 mM Tris.HCl, pH 7.3, 100 mM glycine, 10 % glycerol.

Storage: -80 °C

Storage Comment: Store at -80°C. Thaw on ice, aliquot to individual single-use tubes, and then re-freeze immediately. Only 2-3 freeze thaw cycles are recommended.

## Images



### Western Blotting

**Image 1.** Validation with Western Blot