

Datasheet for ABIN2724614
LMOD3 Protein (Myc-DYKDDDDK Tag)



[Go to Product page](#)

1 Image

Overview

Quantity:	20 µg
Target:	LMOD3
Origin:	Human
Source:	HEK-293 Cells
Protein Type:	Recombinant
Purification tag / Conjugate:	This LMOD3 protein is labelled with Myc-DYKDDDDK Tag.
Application:	Antibody Production (AbP), Standard (STD)

Product Details

Characteristics:

- Recombinant human Leiomodin-3 protein expressed in HEK293 cells.
- Produced with end-sequenced ORF clone

Purity: > 80 % as determined by SDS-PAGE and Coomassie blue staining

Target Details

Target: LMOD3

Alternative Name: Leiomodin-3 ([LMOD3 Products](#))

Background: The protein encoded by this gene is a member of the leiomodin family of proteins. This protein contains three actin-binding domains, a tropomyosin domain, a leucine-rich repeat domain, and a Wiskott-Aldrich syndrome protein homology 2 domain (WH2). Localization of this protein to the pointed ends of thin filaments has been observed, and there is evidence that this protein acts as a catalyst of actin nucleation, and is important to the organization of sarcomeric thin

Target Details

filaments in skeletal muscles. Mutations in this gene have been associated as one cause of Nemaline myopathy, as other genes have also been linked to this disorder. Nemaline myopathy is a disorder characterized by nonprogressive generalized muscle weakness and protein inclusions (nemaline bodies) in skeletal myofibers. Patients with mutations in this gene often present with a severe congenital form of the disorder.

Molecular Weight: 64.7 kDa

NCBI Accession: [NP_938012](#)

Application Details

Application Notes: Recombinant human proteins can be used for:
Native antigens for optimized antibody production
Positive controls in ELISA and other antibody assays

Comment: The tag is located at the C-terminal.

Restrictions: For Research Use only

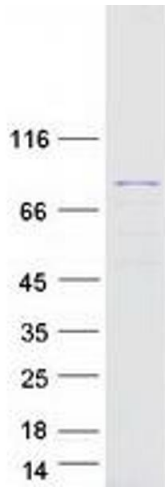
Handling

Concentration: 50 µg/mL

Buffer: 25 mM Tris.HCl, pH 7.3, 100 mM glycine, 10 % glycerol.

Storage: -80 °C

Storage Comment: Store at -80°C. Thaw on ice, aliquot to individual single-use tubes, and then re-freeze immediately. Only 2-3 freeze thaw cycles are recommended.



Western Blotting

Image 1. Validation with Western Blot