



[Go to Product page](#)

Datasheet for ABIN2724624

anti-LEMD3 antibody

3 Images

Overview

Quantity:	0.1 mL
Target:	LEMD3
Reactivity:	Human, Monkey, Dog
Host:	Mouse
Clonality:	Monoclonal
Application:	Western Blotting (WB), Immunofluorescence (IF), Immunoprecipitation (IP)

Product Details

Immunogen:	Full length human recombinant protein of human LEMD3 (NP_055134) produced in HEK293T cell.
Clone:	3H2
Isotype:	IgG1
Purification:	Purified from mouse ascites fluids by affinity chromatography

Target Details

Target:	LEMD3
Alternative Name:	LEMD3 (LEMD3 Products)
Molecular Weight:	100.0 kDa
Gene ID:	23592
NCBI Accession:	NM_014319

Target Details

HGNC: 23592

Application Details

Application Notes: WB 1:500, IF 1:100, IP 2-4 µg/mg

Comment: The concentration of the product may vary between different lots.

Restrictions: For Research Use only

Handling

Format: Liquid

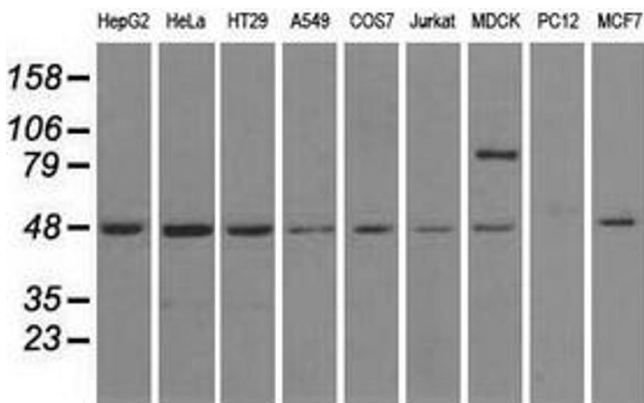
Concentration: 0.5-1.0 mg/mL

Buffer: PBS (pH 7.3) containing 1 % BSA, 50 % glycerol and 0.02 % sodium azide.

Preservative: Sodium azide

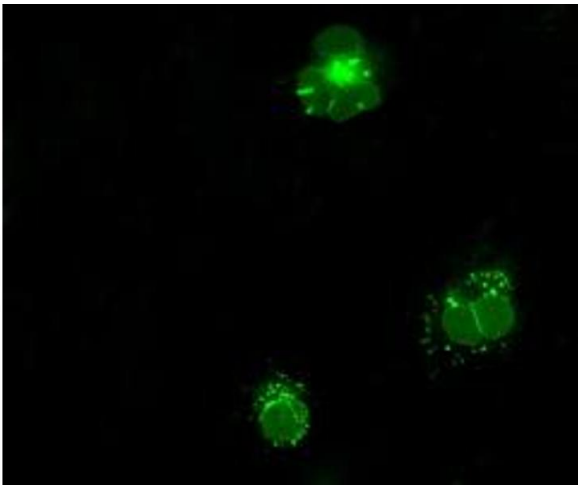
Precaution of Use: This product contains sodium azide: a POISONOUS AND HAZARDOUS SUBSTANCE which should be handled by trained staff only.

Images



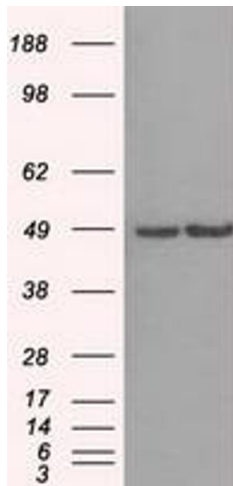
Western Blotting

Image 1. Western blot analysis of extracts (35 µg) from 9 different cell lines by using anti-LEMD3 monoclonal antibody.



Immunofluorescence

Image 2. Anti-LEMD3 mouse monoclonal antibody (ABIN2453229) immunofluorescent staining of COS7 cells transiently transfected by pCMV6-ENTRY LEMD3 (RC212759).



Western Blotting

Image 3. HEK293T cells were transfected with the pCMV6-ENTRY control (Left lane) or pCMV6-ENTRY LEMD3 (Right lane) cDNA for 48 hrs and lysed. Equivalent amounts of cell lysates (5 µg per lane) were separated by SDS-PAGE and immunoblotted with anti-LEMD3.