

Datasheet for ABIN2724675

**LILRB2 Protein (Transcript Variant 2)**[Go to Product page](#)**1** Image

## Overview

Quantity:	10 µg
Target:	LILRB2
Protein Characteristics:	Transcript Variant 2
Origin:	Human
Source:	HEK-293 Cells
Protein Type:	Recombinant
Application:	Antibody Production (AbP), Standard (STD)

## Product Details

Characteristics:	<ul style="list-style-type: none"><li>• Recombinant human Leukocyte immunoglobulin-like receptor, subfamily B (with TM and ITIM domains), member 2 (LILRB2), transcript variant 2 (transcript variant 2) protein expressed in HEK293 cells.</li><li>• Produced with end-sequenced ORF clone</li></ul>
Purity:	> 95 % as determined by SDS-PAGE and Coomassie blue staining
Endotoxin Level:	< 0.1 EU per µg protein as determined by LAL test

## Target Details

Target:	LILRB2
Abstract:	<a href="#">LILRB2 Products</a>
Background:	This gene is a member of the leukocyte immunoglobulin-like receptor (LIR) family, which is found in a gene cluster at chromosomal region 19q13.4. The encoded protein belongs to the

## Target Details

---

subfamily B class of LIR receptors which contain two or four extracellular immunoglobulin domains, a transmembrane domain, and two to four cytoplasmic immunoreceptor tyrosine-based inhibitory motifs (ITIMs). The receptor is expressed on immune cells where it binds to MHC class I molecules on antigen-presenting cells and transduces a negative signal that inhibits stimulation of an immune response. It is thought to control inflammatory responses and cytotoxicity to help focus the immune response and limit autoreactivity. Multiple transcript variants encoding different isoforms have been found for this gene.

---

Molecular Weight: 48.6 kDa

---

NCBI Accession: [NP\\_001074447](#)

---

Pathways: [Cellular Response to Molecule of Bacterial Origin](#)

## Application Details

---

Application Notes: Recombinant human proteins can be used for:  
Native antigens for optimized antibody production  
Positive controls in ELISA and other antibody assays

---

Restrictions: For Research Use only

## Handling

---

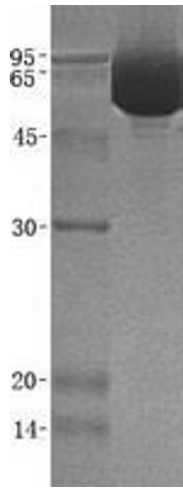
Buffer: Lyophilized from a 0.2  $\mu$ M filtered solution of 20 mM Phosphate buffer, 150 mM NaCl, pH 7.2.  
Stable for at least 6 months from date of receipt under proper storage and handling conditions.

---

Storage: -80 °C

---

Storage Comment: Store at -80°C. Thaw on ice, aliquot to individual single-use tubes, and then re-freeze immediately. Only 2-3 freeze thaw cycles are recommended.



### Western Blotting

**Image 1.** Validation with Western Blot