

Datasheet for ABIN2724811  
**LCN15 Protein (Myc-DYKDDDDK Tag)**



[Go to Product page](#)

1 Image

## Overview

Quantity:	20 µg
Target:	LCN15
Origin:	Human
Source:	HEK-293 Cells
Protein Type:	Recombinant
Purification tag / Conjugate:	This LCN15 protein is labelled with Myc-DYKDDDDK Tag.
Application:	Antibody Production (AbP), Standard (STD)

## Product Details

Characteristics:	<ul style="list-style-type: none"><li>• Recombinant human Lipocalin-15 (LCN15) protein expressed in HEK293 cells.</li><li>• Produced with end-sequenced ORF clone</li></ul>
Purity:	> 80 % as determined by SDS-PAGE and Coomassie blue staining

## Target Details

Target:	LCN15
Alternative Name:	Lipocalin-15 (Lcn15) ( <a href="#">LCN15 Products</a> )
Molecular Weight:	20.3 kDa
NCBI Accession:	<a href="#">NP_976222</a>

## Application Details

---

Application Notes: Recombinant human proteins can be used for:  
Native antigens for optimized antibody production  
Positive controls in ELISA and other antibody assays

---

Comment: The tag is located at the C-terminal.

---

Restrictions: For Research Use only

---

## Handling

---

Concentration: 50 µg/mL

---

Buffer: 25 mM Tris.HCl, pH 7.3, 100 mM glycine, 10 % glycerol.

---

Storage: -80 °C

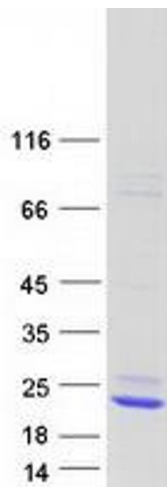
---

Storage Comment: Store at -80°C. Thaw on ice, aliquot to individual single-use tubes, and then re-freeze immediately. Only 2-3 freeze thaw cycles are recommended.

---

## Images

---



### Western Blotting

**Image 1.** Validation with Western Blot