

Datasheet for ABIN2724881

**BPIFB1 Protein (Myc-DYKDDDDK Tag)**[1 Image](#)[1 Publication](#)[Go to Product page](#)

## Overview

Quantity:	20 µg
Target:	BPIFB1
Origin:	Human
Source:	HEK-293 Cells
Protein Type:	Recombinant
Purification tag / Conjugate:	This BPIFB1 protein is labelled with Myc-DYKDDDDK Tag.
Application:	Antibody Production (AbP), Standard (STD)

## Product Details

Characteristics:	<ul style="list-style-type: none"><li>• Recombinant human LPLUNC1 protein expressed in HEK293 cells.</li><li>• Produced with end-sequenced ORF clone</li></ul>
Purity:	> 80 % as determined by SDS-PAGE and Coomassie blue staining

## Target Details

Target:	BPIFB1
Alternative Name:	Lplunc1 ( <a href="#">BPIFB1 Products</a> )
Background:	The protein encoded by this gene may be involved in the innate immune response to bacterial exposure in the mouth, nasal cavities, and lungs. The encoded protein is secreted and is a member of the BPI/LBP/PLUNC protein superfamily. This gene is found with other members of the superfamily in a cluster on chromosome 20.
Molecular Weight:	50.2 kDa

## Target Details

---

NCBI Accession: [NP\\_149974](#)

## Application Details

---

Application Notes: Recombinant human proteins can be used for:  
Native antigens for optimized antibody production  
Positive controls in ELISA and other antibody assays

Comment: The tag is located at the C-terminal.

Restrictions: For Research Use only

## Handling

---

Concentration: 50 µg/mL

Buffer: 25 mM Tris.HCl, pH 7.3, 100 mM glycine, 10 % glycerol.

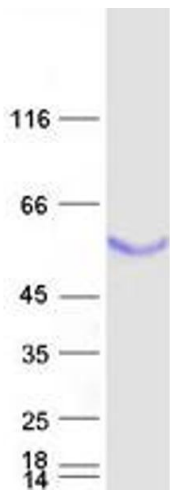
Storage: -80 °C

Storage Comment: Store at -80°C. Thaw on ice, aliquot to individual single-use tubes, and then re-freeze immediately. Only 2-3 freeze thaw cycles are recommended.

## Publications

---

Product cited in: Shin, Uddin, Citorik, Wang, Della Pelle, Kradin, Bingle, Bingle, Camilli, Bhuiyan, Shirin, Ryan, Calderwood, Finberg, Qadri, Larocque, Harris: "LPLUNC1 modulates innate immune responses to *Vibrio cholerae*." in: **The Journal of infectious diseases**, Vol. 204, Issue 9, pp. 1349-57, (2011) ([PubMed](#)).



Western Blotting

**Image 1.** Validation with Western Blot