

Datasheet for ABIN2724901

anti-LRRC25 antibody**2** Images[Go to Product page](#)

Overview

Quantity:	0.1 mL
Target:	LRRC25
Reactivity:	Human
Host:	Mouse
Clonality:	Monoclonal
Conjugate:	This LRRC25 antibody is un-conjugated
Application:	Western Blotting (WB), Flow Cytometry (FACS)

Product Details

Immunogen:	Full length human recombinant protein of human LRRC25(NP_660299) produced in HEK293T cell.
Clone:	1B3
Isotype:	IgG2b
Characteristics:	Homo sapiens leucine rich repeat containing 25 (LRRC25)
Purification:	Purified from mouse ascites fluids by affinity chromatography

Target Details

Target:	LRRC25
Alternative Name:	LRRC25 (LRRC25 Products)
Molecular Weight:	33 kDa

Target Details

Gene ID: 126364

NCBI Accession: [NM_145256](#)

HGNC: 126364

Application Details

Application Notes: WB 1:2000, FLOW 1:100,

Comment: The concentration of the product may vary between different lots.

Restrictions: For Research Use only

Handling

Format: Liquid

Concentration: 0.5-1.0 mg/mL

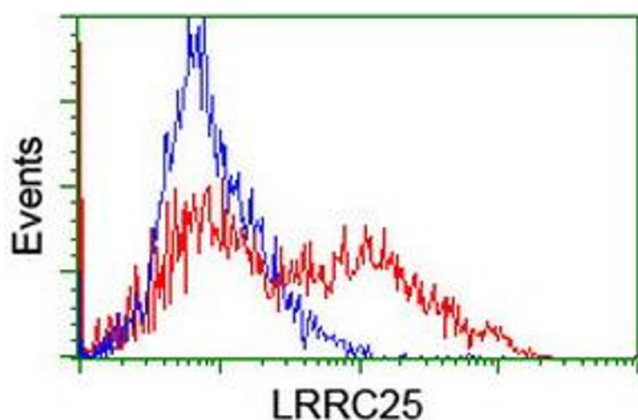
Buffer: PBS (PH 7.3) containing 1 % BSA, 50 % glycerol and 0.02 % sodium azide.

Preservative: Sodium azide

Precaution of Use: This product contains sodium azide: a POISONOUS AND HAZARDOUS SUBSTANCE which should be handled by trained staff only.

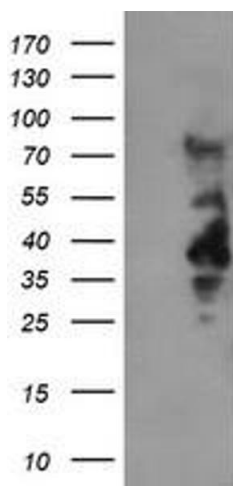
Storage: -20 °C

Images



Flow Cytometry

Image 1. HEK293T cells transfected with either RC209911 overexpress plasmid (Red) or empty vector control plasmid (Blue) were immunostained by anti-LRRC25 antibody (ABIN2455879), and then analyzed by flow cytometry.



Western Blotting

Image 2. HEK293T cells were transfected with the pCMV6-ENTRY control (Left lane) or pCMV6-ENTRY LRRC25 (Right lane) cDNA for 48 hrs and lysed. Equivalent amounts of cell lysates (5 μ g per lane) were separated by SDS-PAGE and immunoblotted with anti-LRRC25.