

Datasheet for ABIN2724915

LRRC3B Protein (Myc-DYKDDDDK Tag)[Go to Product page](#)**1** Image

Overview

Quantity:	20 µg
Target:	LRRC3B
Origin:	Human
Source:	HEK-293 Cells
Protein Type:	Recombinant
Purification tag / Conjugate:	This LRRC3B protein is labelled with Myc-DYKDDDDK Tag.
Application:	Antibody Production (AbP), Standard (STD)

Product Details

Characteristics:	<ul style="list-style-type: none">• Recombinant human LRRC3B / LRP15 protein expressed in HEK293 cells.• Produced with end-sequenced ORF clone
Purity:	> 80 % as determined by SDS-PAGE and Coomassie blue staining

Target Details

Target:	LRRC3B
Alternative Name:	Lrrc3b,lrp15 (LRRC3B Products)
Background:	The protein encoded by this gene is a tumor suppressor, with lowered expression levels found in gastric, renal, colorectal, lung, and breast cancer tissues. The promoter of this gene is frequently hypermethylated in these cancer tissues, although the hypermethylation does not appear to be the cause of the reduced expression of this gene. Several transcript variants encoding the same protein have been found for this gene.

Target Details

Molecular Weight:	29.1 kDa
NCBI Accession:	NP_443185

Application Details

Application Notes:	Recombinant human proteins can be used for: Native antigens for optimized antibody production Positive controls in ELISA and other antibody assays
--------------------	--

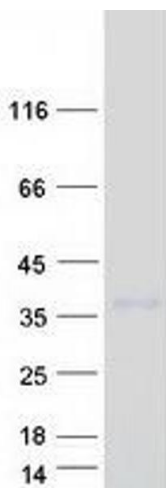
Comment:	The tag is located at the C-terminal.
----------	---------------------------------------

Restrictions:	For Research Use only
---------------	-----------------------

Handling

Concentration:	50 µg/mL
Buffer:	25 mM Tris.HCl, pH 7.3, 100 mM glycine, 10 % glycerol.
Storage:	-80 °C
Storage Comment:	Store at -80°C. Thaw on ice, aliquot to individual single-use tubes, and then re-freeze immediately. Only 2-3 freeze thaw cycles are recommended.

Images



Western Blotting

Image 1. Validation with Western Blot