

Datasheet for ABIN2724998

anti-LTA4H antibody

3 Images

1 Publication

[Go to Product page](#)

Overview

Quantity:	0.1 mL
Target:	LTA4H
Reactivity:	Human, Rat, Dog
Host:	Mouse
Clonality:	Monoclonal
Application:	Western Blotting (WB), Immunohistochemistry (IHC), Immunoprecipitation (IP)

Product Details

Immunogen:	Full-length protein expressed in 293T cell transfected with human LTA4H expression vector
Clone:	8F4
Isotype:	IgG2a
Purification:	Purified from mouse ascites fluids by affinity chromatography

Target Details

Target:	LTA4H
Alternative Name:	LTA4H (LTA4H Products)
Molecular Weight:	69.3 KDa
Gene ID:	4048
NCBI Accession:	NM_000895
HGNC:	4048

Application Details

Application Notes:	WB 1:2000, IHC 1:50, IP 2-4 µg/mg
Comment:	The concentration of the product may vary between different lots.
Restrictions:	For Research Use only

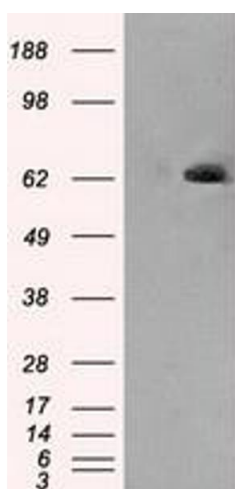
Handling

Format:	Liquid
Concentration:	0.5-1.0 mg/mL
Buffer:	PBS (pH 7.3) containing 1 % BSA, 50 % glycerol and 0.02 % sodium azide.
Preservative:	Sodium azide
Precaution of Use:	This product contains sodium azide: a POISONOUS AND HAZARDOUS SUBSTANCE which should be handled by trained staff only.

Publications

Product cited in:	Wells, O'Reilly, Szul, Sullivan, Handley, Garrett, McNicholas, Roda, Miller, Tal-Singer, Gaggari, Rennard, Jackson, Blalock: "An aberrant leukotriene A4 hydrolase-proline-glycine-proline pathway in the pathogenesis of chronic obstructive pulmonary disease." in: American journal of respiratory and critical care medicine , Vol. 190, Issue 1, pp. 51-61, (2014) (PubMed).
-------------------	--

Images



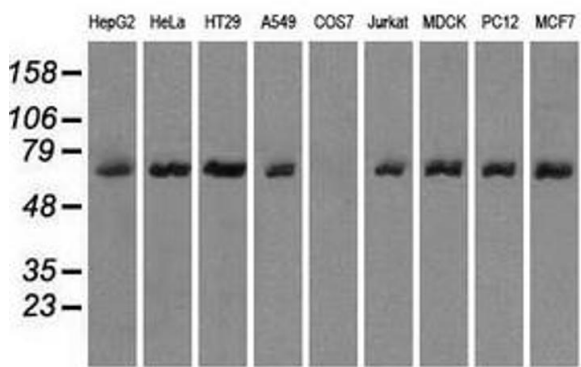
Western Blotting

Image 1. HEK293T cells were transfected with the pCMV6-ENTRY control (Left lane) or pCMV6-ENTRY LTA4H (Right lane) cDNA for 48 hrs and lysed. Equivalent amounts of cell lysates (5 µg per lane) were separated by SDS-PAGE and immunoblotted with anti-LTA4H.



Immunohistochemistry

Image 2. Immunohistochemical staining of paraffin-embedded pancreas tissue using anti-LTA4H mouse monoclonal antibody. (ABIN2452494, Dilution 1:50)



Western Blotting

Image 3. Western blot analysis of extracts (35 µg) from 9 different cell lines by using anti-LTA4H monoclonal antibody.