

Datasheet for ABIN2725025

LUM Protein (Myc-DYKDDDDK Tag)



[Go to Product page](#)

1 Image

Overview

| | |
|-------------------------------|---|
| Quantity: | 20 µg |
| Target: | LUM |
| Origin: | Human |
| Source: | HEK-293 Cells |
| Protein Type: | Recombinant |
| Purification tag / Conjugate: | This LUM protein is labelled with Myc-DYKDDDDK Tag. |
| Application: | Antibody Production (AbP), Standard (STD) |

Product Details

| | |
|------------------|---|
| Characteristics: | <ul style="list-style-type: none"> • Recombinant human Lumican protein expressed in HEK293 cells. • Produced with end-sequenced ORF clone |
| Purity: | > 80 % as determined by SDS-PAGE and Coomassie blue staining |

Target Details

| | |
|-------------------|--|
| Target: | LUM |
| Alternative Name: | Lumican (LUM Products) |
| Background: | This gene encodes a member of the small leucine-rich proteoglycan (SLRP) family that includes decorin, biglycan, fibromodulin, keratocan, epiphykan, and osteoglycin. In these bifunctional molecules, the protein moiety binds collagen fibrils and the highly charged hydrophilic glycosaminoglycans regulate interfibrillar spacings. Lumican is the major keratan sulfate proteoglycan of the cornea but is also distributed in interstitial collagenous matrices throughout |

Target Details

| | |
|-------------------|--|
| | the body. Lumican may regulate collagen fibril organization and circumferential growth, corneal transparency, and epithelial cell migration and tissue repair. |
| Molecular Weight: | 36.6 kDa |
| NCBI Accession: | NP_002336 |
| Pathways: | Glycosaminoglycan Metabolic Process |

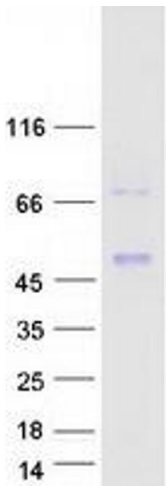
Application Details

| | |
|--------------------|--|
| Application Notes: | Recombinant human proteins can be used for: Native antigens for optimized antibody production Positive controls in ELISA and other antibody assays |
| Comment: | The tag is located at the C-terminal. |
| Restrictions: | For Research Use only |

Handling

| | |
|------------------|---|
| Concentration: | 50 µg/mL |
| Buffer: | 25 mM Tris.HCl, pH 7.3, 100 mM glycine, 10 % glycerol. |
| Storage: | -80 °C |
| Storage Comment: | Store at -80°C. Thaw on ice, aliquot to individual single-use tubes, and then re-freeze immediately. Only 2-3 freeze thaw cycles are recommended. |

Images



Western Blotting

Image 1. Validation with Western Blot