

Datasheet for ABIN2725047

**PLA2G15 Protein (Myc-DYKDDDDK Tag)**[Go to Product page](#)**1** Image

## Overview

Quantity:	20 µg
Target:	PLA2G15
Origin:	Human
Source:	HEK-293 Cells
Protein Type:	Recombinant
Purification tag / Conjugate:	This PLA2G15 protein is labelled with Myc-DYKDDDDK Tag.
Application:	Antibody Production (AbP), Standard (STD)

## Product Details

Characteristics:	<ul style="list-style-type: none"><li>• Recombinant human LYPLA3 protein expressed in HEK293 cells.</li><li>• Produced with end-sequenced ORF clone</li></ul>
Purity:	> 80 % as determined by SDS-PAGE and Coomassie blue staining

## Target Details

Target:	PLA2G15
Alternative Name:	Lypla3 ( <a href="#">PLA2G15 Products</a> )
Background:	Lysophospholipases are enzymes that act on biological membranes to regulate the multifunctional lysophospholipids. The protein encoded by this gene hydrolyzes lysophosphatidylcholine to glycerophosphorylcholine and a free fatty acid. This enzyme is present in the plasma and thought to be associated with high-density lipoprotein. A later paper contradicts the function of this gene. It demonstrates that this gene encodes a lysosomal

## Target Details

	enzyme instead of a lysophospholipase and has both calcium-independent phospholipase A2 and transacylase activities.
Molecular Weight:	46.5 kDa
NCBI Accession:	<a href="#">NP_036452</a>
Pathways:	<a href="#">Monocarboxylic Acid Catabolic Process</a>

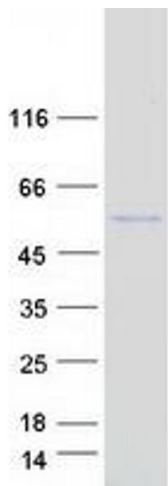
## Application Details

Application Notes:	Recombinant human proteins can be used for: Native antigens for optimized antibody production Positive controls in ELISA and other antibody assays
Comment:	The tag is located at the C-terminal.
Restrictions:	For Research Use only

## Handling

Concentration:	50 µg/mL
Buffer:	25 mM Tris.HCl, pH 7.3, 100 mM glycine, 10 % glycerol.
Storage:	-80 °C
Storage Comment:	Store at -80°C. Thaw on ice, aliquot to individual single-use tubes, and then re-freeze immediately. Only 2-3 freeze thaw cycles are recommended.

## Images



**Western Blotting**

**Image 1.** Validation with Western Blot